

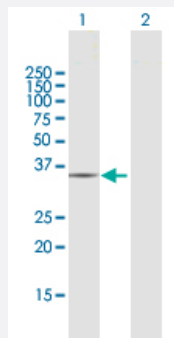
MaxPab®

CRYZ purified MaxPab rabbit polyclonal antibody (D01P)

Catalog # H00001429-D01P

Size 100 ug

Applications



Western Blot (Transfected lysate)

Western Blot analysis of CRYZ expression in transfected 293T cell line ([H00001429-T02](#)) by CRYZ MaxPab polyclonal antibody.

Lane 1: CRYZ transfected lysate(35.20 KDa).

Lane 2: Non-transfected lysate.

Specification

Product Description	Rabbit polyclonal antibody raised against a full-length human CRYZ protein.
Immunogen	CRYZ (NP_001880.2, 1 a.a. ~ 329 a.a) full-length human protein.
Sequence	MATGQKLMRAVRVFEFGGPEVLKLRSDIAVPIPKDHQVLKLVHACGVNPVETYRSGTYSRKPLLP YTPGSDVAGVIEAVGDNASAFKKGDRVFTSSTISGGYAEYALAADHTVYKLPEKLDFKQGAAGIPY FTAYRALIHSACVKAGESVLVHGASGGVGLAACQIARAYGLKILGTAGTEEGQKVLQNGAHEVFN HREVNYDKIKKYVGEKGIDIIIEMLANVNLSKDLSSLSHGGRVIVGSRGTIEINPRDTMAKESSIIGVT LFSSTKEEFQQYAAALQAGMEIGWLKPVIGSQYPLEKVAEAEAHENIIHGSGATGKMILL
Host	Rabbit
Reactivity	Human
Interspecies Antigen Sequence	Mouse (81); Rat (81)
Quality Control Testing	Antibody reactive against mammalian transfected lysate.
Storage Buffer	In 1x PBS, pH 7.4
Storage Instruction	Store at -20°C or lower. Aliquot to avoid repeated freezing and thawing.

Applications

- Western Blot (Transfected lysate)

Western Blot analysis of CRYZ expression in transfected 293T cell line ([H00001429-T02](#)) by CRYZ MaxPab polyclonal antibody.

Lane 1: CRYZ transfected lysate(35.20 KDa).

Lane 2: Non-transfected lysate.

[Protocol Download](#)

Gene Info — CRYZ

Entrez GeneID [1429](#)

GeneBank Accession# [NM_001889.2](#)

Protein Accession# [NP_001880.2](#)

Gene Name CRYZ

Gene Alias DKFZp779E0834, FLJ41475

Gene Description crystallin, zeta (quinone reductase)

Omim ID [123691](#)

Gene Ontology [Hyperlink](#)

Gene Summary

Crystallins are separated into two classes: taxon-specific, or enzyme, and ubiquitous. The latter class constitutes the major proteins of vertebrate eye lens and maintains the transparency and refractive index of the lens. The former class is also called phylogenetically-restricted crystallins. This gene encodes a taxon-specific crystallin protein which has NADPH-dependent quinone reductase activity distinct from other known quinone reductases. It lacks alcohol dehydrogenase activity although by similarity it is considered a member of the zinc-containing alcohol dehydrogenase family. Unlike other mammalian species, in humans, lens expression is low. Alternatively spliced transcript variants encoding different isoforms have been found for this gene. One pseudogene is known to exist. [provided by RefSeq]

Other Designations NADPH:quinone reductase|OTTHUMP00000011194|crystallin, zeta|quinone oxidoreductase

Disease

- [Parkinson disease](#)