

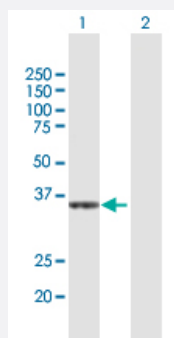
MaxPab®

CRYZ MaxPab rabbit polyclonal antibody (D01)

Catalog # H00001429-D01

Size 100 uL

Applications

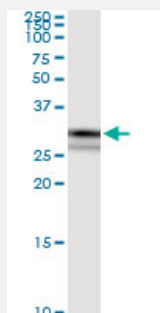


Western Blot (Transfected lysate)

Western Blot analysis of CRYZ expression in transfected 293T cell line ([H00001429-T01](#)) by CRYZ MaxPab polyclonal antibody.

Lane 1: CRYZ transfected lysate(35.20 kDa).

Lane 2: Non-transfected lysate.



Immunoprecipitation

Immunoprecipitation of CRYZ transfected lysate using anti-CRYZ MaxPab rabbit polyclonal antibody and Protein A Magnetic Bead, and immunoblotted with CRYZ purified MaxPab mouse polyclonal antibody (B01P) ([H00001429-B01P](#)).

Specification

Product Description

Rabbit polyclonal antibody raised against a full-length human CRYZ protein.

Immunogen

CRYZ (NP_001880.2, 1 a.a. ~ 329 a.a) full-length human protein.

Sequence

MATGQKLMRAVRVFEFGGPEVLKLRSDIAVPIPKDHQVLIKVHACGVNPVETYRSGTYSRKPLLP
YTPGSDVAGVIEAVGDNASAFKKGDRVFTSSTISGGYAEYALAADHTVYKLPEKLDKQGAAGIPY
FTAYRALIHSACVKAGESVLVHGASGGVGLAACQIARAYGLKILGTAGTEEGQKIVLQNGAHEVFN
HREVNIDKIKKYVGEKGIDIIIEMLANVNLSKDLSSLSHGGRVIVGSRGTIEINPRDTMAKESSIIGVT
LFSSTKEEFQQYAAALQAGMEIGWLKPVIGSQYPLEKVAEAEHENIIHGSGATGKMILL

Host

Rabbit

Reactivity	Human
Interspecies Antigen Sequence	Mouse (81); Rat (81)
Quality Control Testing	Antibody reactive against mammalian transfected lysate.
Storage Buffer	No additive
Storage Instruction	Store at -20°C or lower. Aliquot to avoid repeated freezing and thawing.

Applications

- Western Blot (Transfected lysate)

Western Blot analysis of CRYZ expression in transfected 293T cell line ([H00001429-T01](#)) by CRYZ MaxPab polyclonal antibody.

Lane 1: CRYZ transfected lysate(35.20 KDa).

Lane 2: Non-transfected lysate.

[Protocol Download](#)

- Immunoprecipitation

Immunoprecipitation of CRYZ transfected lysate using anti-CRYZ MaxPab rabbit polyclonal antibody and Protein A Magnetic Bead, and immunoblotted with CRYZ purified MaxPab mouse polyclonal antibody (B01P) ([H00001429-B01P](#)).

[Protocol Download](#)

Gene Info — CRYZ

Entrez GeneID	1429
GeneBank Accession#	NM_001889.2
Protein Accession#	NP_001880.2
Gene Name	CRYZ
Gene Alias	DKFZp779E0834, FLJ41475
Gene Description	crystallin, zeta (quinone reductase)
Omim ID	123691
Gene Ontology	Hyperlink

Gene Summary

Crystallins are separated into two classes: taxon-specific, or enzyme, and ubiquitous. The latter class constitutes the major proteins of vertebrate eye lens and maintains the transparency and refractive index of the lens. The former class is also called phylogenetically-restricted crystallins. This gene encodes a taxon-specific crystallin protein which has NADPH-dependent quinone reductase activity distinct from other known quinone reductases. It lacks alcohol dehydrogenase activity although by similarity it is considered a member of the zinc-containing alcohol dehydrogenase family. Unlike other mammalian species, in humans, lens expression is low. Alternatively spliced transcript variants encoding different isoforms have been found for this gene. One pseudogene is known to exist. [provided by RefSeq]

Other Designations

NADPH:quinone reductase|OTTHUMP00000011194|crystallin, zeta|quinone oxidoreductase

Disease

- [Parkinson disease](#)