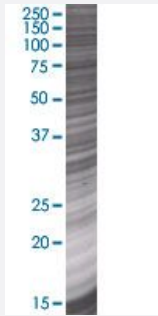


CRYM 293T Cell Transient Overexpression Lysate(Denatured)

Catalog # H00001428-T01

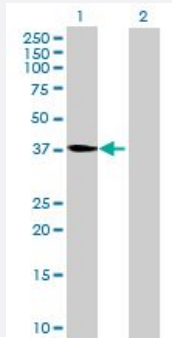
Size 100 uL

Applications



SDS-PAGE Gel

CRYM transfected lysate.



Western Blot

Lane 1: CRYM transfected lysate (34.65 KDa)

Lane 2: Non-transfected lysate.

Specification

Transfected Cell Line 293T

Plasmid pCMV-CRYM full-length

Host Human

Theoretical MW (kDa) 34.65

Quality Control Testing Transient overexpression cell lysate was tested with Anti-CRYM antibody ([H00001428-B01](#)) by Western Blots.
 SDS-PAGE Gel
 CRYM transfected lysate.
 Western Blot
 Lane 1: CRYM transfected lysate (34.65 KDa)
 Lane 2: Non-transfected lysate.

Storage Buffer

1X Sample Buffer (50 mM Tris-HCl, 2% SDS, 10% glycerol, 300 mM 2-mercaptoethanol, 0.01% Bromophenol blue)

Storage Instruction

Store at -80°C. Aliquot to avoid repeated freezing and thawing.

Applications

- Western Blot

Gene Info — CRYM

Entrez GeneID[1428](#)**GeneBank Accession#**[NM_001888.2](#)**Protein Accession#**[NP_001879.1](#)**Gene Name**

CRYM

Gene Alias

DFNA40, THBP

Gene Description

crystallin, mu

Omim ID[123740](#)**Gene Ontology**[Hyperlink](#)**Gene Summary**

Crystallins are separated into two classes: taxon-specific and ubiquitous. The former class is also called phylogenetically-restricted crystallins. The latter class constitutes the major proteins of vertebrate eye lens and maintains the transparency and refractive index of the lens. This gene encodes a taxon-specific crystallin protein that binds NADPH and has sequence similarity to bacterial ornithine cyclodeaminases. The encoded protein does not perform a structural role in lens tissue, and instead it binds thyroid hormone for possible regulatory or developmental roles. Multiple alternatively spliced transcript variants have been found for this gene. [provided by RefSeq]

Other Designations

NADP-regulated thyroid-hormone binding protein|OTTHUMP00000115878