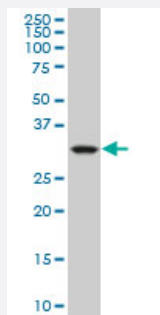


CRYM monoclonal antibody (M09), clone 1C6

Catalog # H00001428-M09

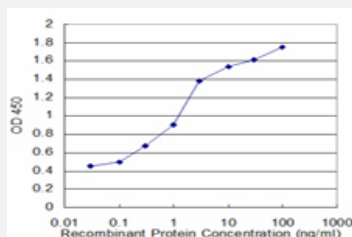
Size 100 ug

Applications



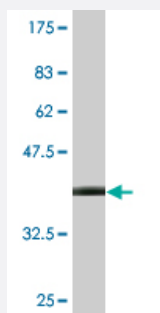
Western Blot (Cell lysate)

CRYM monoclonal antibody (M09), clone 1C6. Western Blot analysis of CRYM expression in K-562 (Cat # L009V1).



Sandwich ELISA (Recombinant protein)

Detection limit for recombinant GST tagged CRYM is approximately 0.03ng/ml as a capture antibody.



Western Blot detection against Immunogen (36.74 kDa) .

Specification

Product Description

Mouse monoclonal antibody raised against a partial recombinant CRYM.

Immunogen	CRYM (NP_001879, 215 a.a. ~ 314 a.a) partial recombinant protein with GST tag. MW of the GST tag alone is 26 KDa.
Sequence	EWVKPGAHINAVGASRPDWRELDDELMKEAVLYVDSQEAAALKESGDVLLSGAEIFAELGEVIKGVKPAHCEKTTVFKSLGMAVEDTVAAKLIYDSWSSGK
Host	Mouse
Reactivity	Human
Isotype	IgG1 Kappa
Quality Control Testing	Antibody Reactive Against Recombinant Protein. Western Blot detection against Immunogen (36.74 KDa) .
Storage Buffer	In 1x PBS, pH 7.4
Storage Instruction	Store at -20°C or lower. Aliquot to avoid repeated freezing and thawing.

Applications

- Western Blot (Cell lysate)

CRYM monoclonal antibody (M09), clone 1C6. Western Blot analysis of CRYM expression in K-562 (Cat # L009V1).

[Protocol Download](#)

- Western Blot (Recombinant protein)

[Protocol Download](#)

- Sandwich ELISA (Recombinant protein)

Detection limit for recombinant GST tagged CRYM is approximately 0.03ng/ml as a capture antibody.

[Protocol Download](#)

- ELISA

Gene Info — CRYM

Entrez GeneID	1428
GeneBank Accession#	NM_001888
Protein Accession#	NP_001879

Gene Name	CRYM
Gene Alias	DFNA40, THBP
Gene Description	crystallin, mu
Omim ID	123740
Gene Ontology	Hyperlink
Gene Summary	<p>Crystallins are separated into two classes: taxon-specific and ubiquitous. The former class is also called phylogenetically-restricted crystallins. The latter class constitutes the major proteins of vertebrate eye lens and maintains the transparency and refractive index of the lens. This gene encodes a taxon-specific crystallin protein that binds NADPH and has sequence similarity to bacterial ornithine cyclodeaminases. The encoded protein does not perform a structural role in lens tissue, and instead it binds thyroid hormone for possible regulatory or developmental roles. Multiple alternatively spliced transcript variants have been found for this gene. [provided by RefSeq]</p>
Other Designations	NADP-regulated thyroid-hormone binding protein OTTHUMP00000115878