

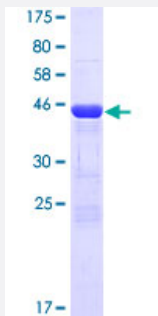
Full-Length

CRYBB2 (Human) Recombinant Protein (P01)

Catalog # H00001415-P01

Size 25 ug, 10 ug

Applications



Specification

Product Description	Human CRYBB2 full-length ORF (NP_000487.1, 1 a.a. - 205 a.a.) recombinant protein with GST-tag at N-terminal.
Sequence	MASDHQTQAGKPQSLNPKIIIFEQENFQGHSELNGPCPNLKETGVEKAGSVLVQAGPWVGYEQ ANCKGEQVFEEKGEYPRWDSWTSSRRTDSLSSLRPIKVDSEHKIILYENPNFTGKKMEIDDDVP SFHAHGYQEKVSSVRVQSGTWVGYQYPGYRGLQYLLEKGDYKDSSDFGAPHPQVQSVRRIRDM QWHQRGAFHPSN
Host	Wheat Germ (in vitro)
Theoretical MW (kDa)	49.8
Interspecies Antigen Sequence	Mouse (97); Rat (97)
Preparation Method	in vitro wheat germ expression system
Purification	Glutathione Sepharose 4 Fast Flow
Quality Control Testing	12.5% SDS-PAGE Stained with Coomassie Blue.
Storage Buffer	50 mM Tris-HCl, 10 mM reduced Glutathione, pH=8.0 in the elution buffer.
Storage Instruction	Store at -80°C. Aliquot to avoid repeated freezing and thawing.

Note

Best use within three months from the date of receipt of this protein.

Applications

- Enzyme-linked Immunoabsorbent Assay
- Western Blot (Recombinant protein)
- Antibody Production
- Protein Array

Gene Info — CRYBB2

Entrez GeneID [1415](#)

GeneBank Accession# [NM_000496.2](#)

Protein Accession# [NP_000487.1](#)

Gene Name CRYBB2

Gene Alias CCA2, CRYB2, CRYB2A, D22S665

Gene Description crystallin, beta B2

Omim ID [123620](#) [601547](#) [604307](#) [607133](#)

Gene Ontology [Hyperlink](#)

Gene Summary

Crystallins are separated into two classes: taxon-specific, or enzyme, and ubiquitous. The latter class constitutes the major proteins of vertebrate eye lens and maintains the transparency and refractive index of the lens. Since lens central fiber cells lose their nuclei during development, these crystallins are made and then retained throughout life, making them extremely stable proteins. Mammalian lens crystallins are divided into alpha, beta, and gamma families; beta and gamma crystallins are also considered as a superfamily. Alpha and beta families are further divided into acidic and basic groups. Seven protein regions exist in crystallins: four homologous motifs, a connecting peptide, and N- and C-terminal extensions. Beta-crystallins, the most heterogeneous, differ by the presence of the C-terminal extension (present in the basic group, none in the acidic group). Beta-crystallins form aggregates of different sizes and are able to self-associate to form dimers or to form heterodimers with other beta-crystallins. This gene, a beta basic group member, is part of a gene cluster with beta-A4, beta-B1, and beta-B3. A chain-terminating mutation was found to cause type 2 cerulean cataracts. [provided by RefSeq]

Other Designations OTTHUMP00000028560|eye lens structural protein

Publication Reference

- [Cross-Reactivity of Antibodies against Leptospiral Recurrent Uveitis-Associated Proteins A and B \(LruA and LruB\) with Eye Proteins.](#)

Verma A, Kumar P, Babb K, Timoney JF, Stevenson B.

PLoS Neglected Tropical Diseases 2010 Aug; 4(8):e778.

Application: ELISA, PI, WB-Re, As a standard, Recombinant protein