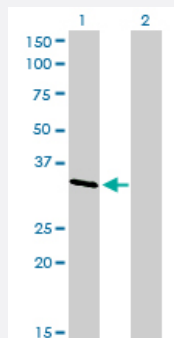


CRKL monoclonal antibody (M03), clone 4B5

Catalog # H00001399-M03

Size 100 ug

Applications

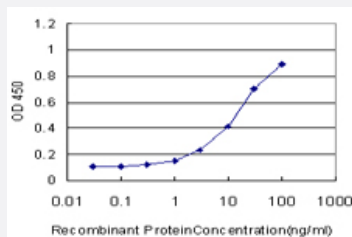


Western Blot (Transfected lysate)

Western Blot analysis of CRKL expression in transfected 293T cell line by CRKL monoclonal antibody (M03), clone 4B5.

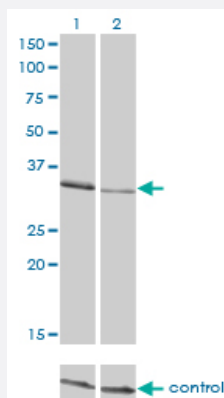
Lane 1: CRKL transfected lysate (33.8 kDa).

Lane 2: Non-transfected lysate.



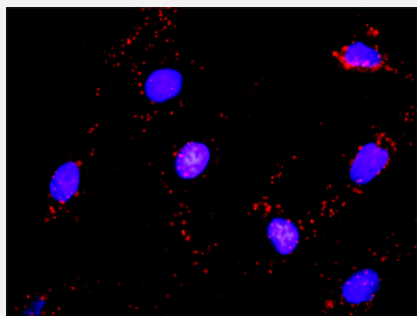
Sandwich ELISA (Recombinant protein)

Detection limit for recombinant GST tagged CRKL is approximately 0.3 ng/ml as a capture antibody.



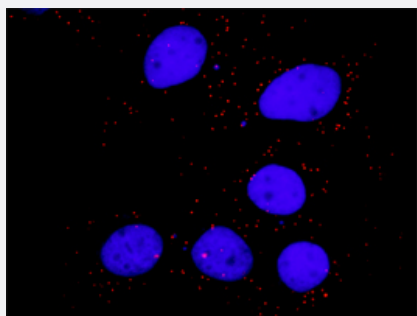
RNAi Knockdown (Antibody validated)

Western blot analysis of CRKL over-expressed 293 cell line, cotransfected with CRKL Validated Chimera RNAi (Cat # H00001399-R01V) (Lane 2) or non-transfected control (Lane 1). Blot probed with CRKL monoclonal antibody (M03), clone 4B5 (Cat # H00001399-M03). GAPDH (36.1 kDa) used as specificity and loading control.



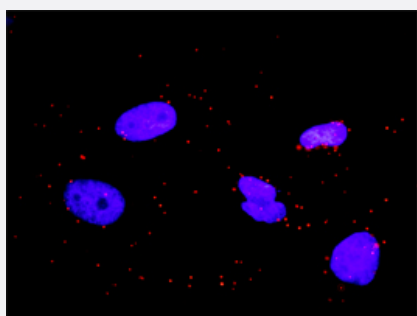
In situ Proximity Ligation Assay (Cell)

Proximity Ligation Analysis of protein-protein interactions between HCK and CRKL. Mahlavu cells were stained with anti-HCK rabbit purified polyclonal 1:1200 and anti-CRKL mouse monoclonal antibody 1:50. Each red dot represents the detection of protein-protein interaction complex, and nuclei were counterstained with DAPI (blue).



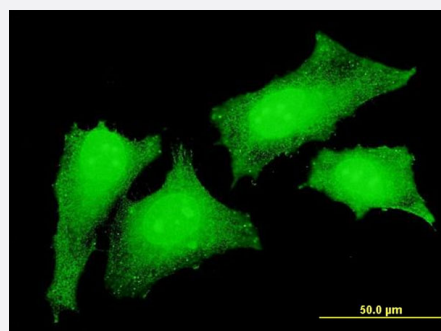
In situ Proximity Ligation Assay (Cell)

Proximity Ligation Analysis of protein-protein interactions between PTK2 and CRKL. Huh7 cells were stained with anti-PTK2 rabbit purified polyclonal 1:600 and anti-CRKL mouse monoclonal antibody 1:100. Each red dot represents the detection of protein-protein interaction complex, and nuclei were counterstained with DAPI (blue).



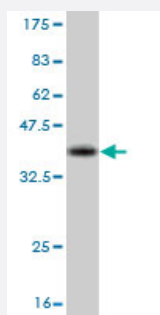
In situ Proximity Ligation Assay (Cell)

Proximity Ligation Analysis of protein-protein interactions between GAB1 and CRKL. HeLa cells were stained with anti-GAB1 rabbit purified polyclonal 1:1200 and anti-CRKL mouse monoclonal antibody 1:50. Each red dot represents the detection of protein-protein interaction complex, and nuclei were counterstained with DAPI (blue).



Immunofluorescence

Immunofluorescence of monoclonal antibody to CRKL on HeLa cell . [antibody concentration 10 ug/ml]



Western Blot detection against Immunogen (36.74 KDa) .

Specification

Product Description	Mouse monoclonal antibody raised against a partial recombinant CRKL.
Immunogen	CRKL (NP_005198, 204 a.a. ~ 303 a.a) partial recombinant protein with GST tag. MW of the GST tag alone is 26 KDa.
Sequence	AHAYAQPQTTTLPVAVSGSPGAAITPLPSTQNGPVFAKAIQKRVPFCAYDKTALALEVGDIMKVTRM NINGQWEGEVNGRKGLFPFTHVKIFDPQNPDENE
Host	Mouse
Reactivity	Human
Isotype	IgG2b Kappa
Quality Control Testing	Antibody Reactive Against Recombinant Protein. Western Blot detection against Immunogen (36.74 KDa) .
Storage Buffer	In 1x PBS, pH 7.4
Storage Instruction	Store at -20°C or lower. Aliquot to avoid repeated freezing and thawing.

Applications

- Western Blot (Transfected lysate)

Western Blot analysis of CRKL expression in transfected 293T cell line by CRKL monoclonal antibody (M03), clone 4B5.

Lane 1: CRKL transfected lysate(33.8 KDa).

Lane 2: Non-transfected lysate.

[Protocol Download](#)

- Western Blot (Recombinant protein)

[Protocol Download](#)

- Sandwich ELISA (Recombinant protein)

Detection limit for recombinant GST tagged CRKL is approximately 0.3ng/ml as a capture antibody.

[Protocol Download](#)

- ELISA

- RNAi Knockdown (Antibody validated)

Western blot analysis of CRKL over-expressed 293 cell line, cotransfected with CRKL Validated Chimera RNAi (Cat # H00001399-R01V) (Lane 2) or non-transfected control (Lane 1). Blot probed with CRKL monoclonal antibody (M03), clone 4B5 (Cat # H00001399-M03). GAPDH (36.1 kDa) used as specificity and loading control.

[Protocol Download](#)

- *In situ* Proximity Ligation Assay (Cell)

Proximity Ligation Analysis of protein-protein interactions between HCK and CRKL. Mahlavu cells were stained with anti-HCK rabbit purified polyclonal 1:1200 and anti-CRKL mouse monoclonal antibody 1:50. Each red dot represents the detection of protein-protein interaction complex, and nuclei were counterstained with DAPI (blue).

- *In situ* Proximity Ligation Assay (Cell)

Proximity Ligation Analysis of protein-protein interactions between PTK2 and CRKL. Huh7 cells were stained with anti-PTK2 rabbit purified polyclonal 1:600 and anti-CRKL mouse monoclonal antibody 1:100. Each red dot represents the detection of protein-protein interaction complex, and nuclei were counterstained with DAPI (blue).

- *In situ* Proximity Ligation Assay (Cell)

Proximity Ligation Analysis of protein-protein interactions between GAB1 and CRKL. HeLa cells were stained with anti-GAB1 rabbit purified polyclonal 1:1200 and anti-CRKL mouse monoclonal antibody 1:50. Each red dot represents the detection of protein-protein interaction complex, and nuclei were counterstained with DAPI (blue).

- Immunofluorescence

Immunofluorescence of monoclonal antibody to CRKL on HeLa cell . [antibody concentration 10 ug/ml]

Gene Info — CRKL

Entrez GeneID [1399](#)

GeneBank Accession# [NM_005207](#)

Protein Accession# [NP_005198](#)

Gene Name CRKL

Gene Alias -

Gene Description v-crk sarcoma virus CT10 oncogene homolog (avian)-like

Omim ID [602007](#)

Gene Ontology [Hyperlink](#)

Gene Summary

This gene encodes a protein kinase containing SH2 and SH3 (src homology) domains which has been shown to activate the RAS and JUN kinase signaling pathways and transform fibroblasts in a RAS-dependent fashion. It is a substrate of the BCR-ABL tyrosine kinase, plays a role in fibroblast transformation by BCR-ABL, and may be oncogenic

Other Designations

v-crk avian sarcoma virus CT10 oncogene homolog-like

Publication Reference

- [An analysis of protein-protein interactions in cross-talk pathways reveals CRKL as a novel prognostic marker in hepatocellular carcinoma.](#)

Liu CH, Chen TC, Chau GY, Jan YH, Chen CH, Hsu CN, Lin KT, Juang YL, Lu PJ, Cheng HC, Chen MH, Chang CF, Ting YS, Kao CY, Hsiao M, Huang CY.

Molecular & Cellular Proteomics 2013 May; 12(5):1335.

Application: Profiling, Human, Huh7 cells, Mahlavu cells

- [PI3K Links NKG2D Signaling to a CrkL Pathway Involved in Natural Killer Cell Adhesion, Polarity, and Granule Secretion.](#)

Segovis CM, Schoon RA, Dick CJ, Nacusi LP, Leibson PJ, Billadeau DD.

Journal of Immunology 2009 Jun; 182(11):6933.

Application: IF, WB-Tr, Human, Mouse, BaF3, Human nature killer cells

Pathway

- [Chemokine signaling pathway](#)
- [Chronic myeloid leukemia](#)
- [ErbB signaling pathway](#)
- [Fc gamma R-mediated phagocytosis](#)
- [Focal adhesion](#)
- [Insulin signaling pathway](#)
- [MAPK signaling pathway](#)
- [Neurotrophin signaling pathway](#)
- [Pathways in cancer](#)
- [Regulation of actin cytoskeleton](#)

- [Renal cell carcinoma](#)

Disease

- [Cardiovascular Diseases](#)
- [Diabetes Mellitus](#)
- [Edema](#)