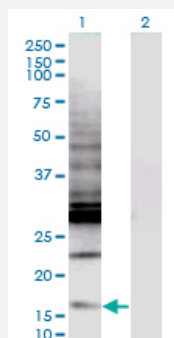


CREBL2 monoclonal antibody (M04), clone 1C1

Catalog # H00001389-M04

Size 100 ug

Applications

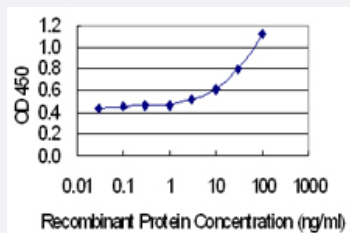


Western Blot (Transfected lysate)

Western Blot analysis of CREBL2 expression in transfected 293T cell line by CREBL2 monoclonal antibody (M04), clone 1C1.

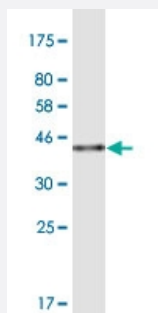
Lane 1: CREBL2 transfected lysate (Predicted MW: 13.8 kDa).

Lane 2: Non-transfected lysate.



Sandwich ELISA (Recombinant protein)

Detection limit for recombinant GST tagged CREBL2 is 1 ng/ml as a capture antibody.



Western Blot detection against Immunogen (40.2 kDa) .

Specification

Product Description

Mouse monoclonal antibody raised against a full-length recombinant CREBL2.

Immunogen	CREBL2 (NP_001301.1, 1 a.a. ~ 120 a.a) full-length recombinant protein with GST tag. MW of the GST tag alone is 26 KDa.
Sequence	MDDSKVVGGKVKKPGKRGRKPAKIDLKAKLERSRQSARECRARKKLRYQYLEELVSSRERAICALREELEMYKQWCMAMDQKGKIPSEIKALLTGEEQNKSSQQNSSRHTKAGKTDANSNSW
Host	Mouse
Reactivity	Human
Isotype	IgG2a Kappa
Quality Control Testing	Antibody Reactive Against Recombinant Protein. Western Blot detection against Immunogen (40.2 KDa) .
Storage Buffer	In 1x PBS, pH 7.4
Storage Instruction	Store at -20°C or lower. Aliquot to avoid repeated freezing and thawing.

Applications

- Western Blot (Transfected lysate)

Western Blot analysis of CREBL2 expression in transfected 293T cell line by CREBL2 monoclonal antibody (M04), clone 1C1.

Lane 1: CREBL2 transfected lysate (Predicted MW: 13.8 KDa).

Lane 2: Non-transfected lysate.

[Protocol Download](#)

- Western Blot (Recombinant protein)

[Protocol Download](#)

- Sandwich ELISA (Recombinant protein)

Detection limit for recombinant GST tagged CREBL2 is 1 ng/ml as a capture antibody.

[Protocol Download](#)

- ELISA

Gene Info — CREBL2

Entrez GeneID [1389](#)

GeneBank Accession# [NM_001310.2](#)

Protein Accession#	NP_001301.1
Gene Name	CREBL2
Gene Alias	MGC117311, MGC138362
Gene Description	cAMP responsive element binding protein-like 2
Omim ID	603476
Gene Ontology	Hyperlink
Gene Summary	<p>cAMP response element (CRE)-binding protein-like-2 (CREBL2) was identified in a search to find genes in a commonly deleted region on chromosome 12p13 flanked by ETV6 and CDKN1B genes, frequently associated with hematopoietic malignancies, as well as breast, non-small-cell lung and ovarian cancers. CREBL2 shares a 41% identity with CRE-binding protein (CREB) over a 48-base long region which encodes the bZip domain of CREB. The bZip domain consists of about 30 amino acids rich in basic residues involved in DNA binding, followed by a leucine zipper motif involved in protein dimerization. This suggests that CREBL2 encodes a protein with DNA binding capabilities. The occurrence of CREBL2 deletion in malignancy suggests that CREBL2 may act as a tumor suppressor gene. [provided by RefSeq]</p>
Other Designations	-

Disease

- [Asthma](#)