

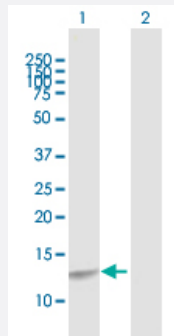
MaxPab®

# CREBL2 purified MaxPab rabbit polyclonal antibody (D01P)

Catalog # H00001389-D01P

Size 100 ug

## Applications



### Western Blot (Transfected lysate)

Western Blot analysis of CREBL2 expression in transfected 293T cell line ([H00001389-T02](#)) by CREBL2 MaxPab polyclonal antibody.

Lane 1: CREBL2 transfected lysate(13.80 KDa).

Lane 2: Non-transfected lysate.

## Specification

Product Description	Rabbit polyclonal antibody raised against a full-length human CREBL2 protein.
Immunogen	CREBL2 (NP_001301.1, 1 a.a. ~ 120 a.a) full-length human protein.
Sequence	MDDSKVVGGKVKKPGKRGRKPAKIDLKAKLERSRQSARECRARKKLRYQYLEELVSSRERAICALREELEMYKQWCMAMDQGGKIPSEIKALLTGEEQNKSSQQNSSRHTKAGKTDANSNSW
Host	Rabbit
Reactivity	Human
Quality Control Testing	Antibody reactive against mammalian transfected lysate.
Storage Buffer	In 1x PBS, pH 7.4
Storage Instruction	Store at -20°C or lower. Aliquot to avoid repeated freezing and thawing.

## Applications

- Western Blot (Transfected lysate)

Western Blot analysis of CREBL2 expression in transfected 293T cell line ([H00001389-T02](#)) by CREBL2 MaxPab polyclonal antibody.

Lane 1: CREBL2 transfected lysate(13.80 KDa).

Lane 2: Non-transfected lysate.

[Protocol Download](#)

## Gene Info — CREBL2

Entrez GeneID [1389](#)

GeneBank Accession# [NM\\_001310.2](#)

Protein Accession# [NP\\_001301.1](#)

Gene Name CREBL2

Gene Alias MGC117311, MGC138362

Gene Description cAMP responsive element binding protein-like 2

Omim ID [603476](#)

Gene Ontology [Hyperlink](#)

**Gene Summary** cAMP response element (CRE)-binding protein-like-2 (CREBL2) was identified in a search to find genes in a commonly deleted region on chromosome 12p13 flanked by ETV6 and CDKN1B genes, frequently associated with hematopoietic malignancies, as well as breast, non-small-cell lung and ovarian cancers. CREBL2 shares a 41% identity with CRE-binding protein (CREB) over a 48-base long region which encodes the bZip domain of CREB. The bZip domain consists of about 30 amino acids rich in basic residues involved in DNA binding, followed by a leucine zipper motif involved in protein dimerization. This suggests that CREBL2 encodes a protein with DNA binding capabilities. The occurrence of CREBL2 deletion in malignancy suggests that CREBL2 may act as a tumor suppressor gene. [provided by RefSeq]

Other Designations -

## Disease

- [Asthma](#)