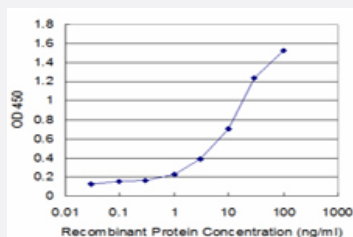


# CREBL1 monoclonal antibody (M02), clone 4D10

Catalog # H00001388-M02

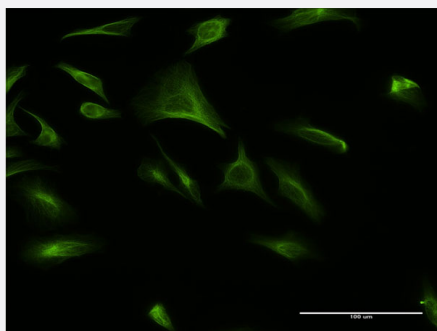
Size 100 ug

## Applications



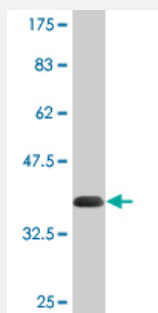
### Sandwich ELISA (Recombinant protein)

Detection limit for recombinant GST tagged CREBL1 is approximately 1ng/ml as a capture antibody.



### Immunofluorescence

Immunofluorescence of monoclonal antibody to ATF6B on HeLa cell . [antibody concentration 10 ug/ml]



Western Blot detection against Immunogen (35.31 KDa) .

## Specification

### Product Description

Mouse monoclonal antibody raised against a partial recombinant CREBL1.

<b>Immunogen</b>	CREBL1 (NP_004372.3, 2 a.a. ~ 88 a.a) partial recombinant protein with GST tag. MW of the GST tag alone is 26 KDa.
<b>Sequence</b>	AELMLLSEIADPTRFFTDNLLSPEDWGLQNSTLYSGLDEVAEEQTQLFRCPEQDVFPDGSGLDV GMDVSPSEPPWELLPIFPDLQVK
<b>Host</b>	Mouse
<b>Reactivity</b>	Human
<b>Interspecies Antigen Sequence</b>	Mouse (89); Rat (89)
<b>Isotype</b>	IgG2a Kappa
<b>Quality Control Testing</b>	Antibody Reactive Against Recombinant Protein. Western Blot detection against Immunogen (35.31 KDa) .
<b>Storage Buffer</b>	In 1x PBS, pH 7.4
<b>Storage Instruction</b>	Store at -20°C or lower. Aliquot to avoid repeated freezing and thawing.

## Applications

- Western Blot (Recombinant protein)

[Protocol Download](#)

- Sandwich ELISA (Recombinant protein)

Detection limit for recombinant GST tagged CREBL1 is approximately 1ng/ml as a capture antibody.

[Protocol Download](#)

- ELISA

- Immunofluorescence

Immunofluorescence of monoclonal antibody to ATF6B on HeLa cell . [antibody concentration 10 ug/ml]

## Gene Info — ATF6B

**Entrez GeneID** [1388](#)

**GeneBank Accession#** [NM\\_004381](#)

Protein Accession#	<a href="#">NP_004372.3</a>
Gene Name	ATF6B
Gene Alias	CREB-RP, CREBL1, FLJ10066, G13
Gene Description	activating transcription factor 6 beta
Omim ID	<a href="#">600984</a>
Gene Ontology	<a href="#">Hyperlink</a>
Gene Summary	<p>The protein encoded by this gene is a transcription factor in the unfolded protein response (UPR) pathway during ER stress. Either as a homodimer or as a heterodimer with ATF6-alpha, the encoded protein binds to the ER stress response element, interacting with nuclear transcription factor Y to activate UPR target genes. The protein is normally found in the membrane of the endoplasmic reticulum; however, under ER stress, the N-terminal cytoplasmic domain is cleaved from the rest of the protein and translocates to the nucleus. Two transcript variants encoding different isoforms have been found for this gene. [provided by RefSeq]</p>
Other Designations	Creb-related protein OTTHUMP00000029433 cAMP responsive element binding protein-like 1 cy clic AMP-dependent transcription factor ATF-6 beta protein G13

## Disease

- [Cardiovascular Diseases](#)
- [Diabetes Mellitus](#)
- [Edema](#)
- [Genetic Predisposition to Disease](#)
- [Kidney Failure](#)
- [Lupus Erythematosus](#)