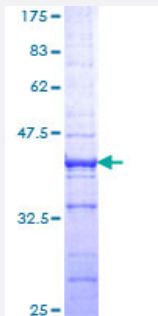


# ATF2 (Human) Recombinant Protein (Q01)

Catalog # H00001386-Q01

Size 25 ug, 10 ug

## Applications



## Specification

<b>Product Description</b>	Human ATF2 partial ORF ( NP_001871, 137 a.a. - 236 a.a.) recombinant protein with GST-tag at N-terminal.
<b>Sequence</b>	PLPHPESTTSDEKEVPLAQTAAQPTSAIRPASLQVPNVLLTSSDSSVLIQQAVPSPTSSTVITQAPS SNRPVVPVPGPFLLLHLPNGQTMPVAIPASIT
<b>Host</b>	Wheat Germ (in vitro)
<b>Theoretical MW (kDa)</b>	36.74
<b>Interspecies Antigen Sequence</b>	Mouse (100); Rat (98)
<b>Preparation Method</b>	<a href="#">in vitro wheat germ expression system</a>
<b>Purification</b>	Glutathione Sepharose 4 Fast Flow
<b>Quality Control Testing</b>	12.5% SDS-PAGE Stained with Coomassie Blue.
<b>Storage Buffer</b>	50 mM Tris-HCl, 10 mM reduced Glutathione, pH=8.0 in the elution buffer.
<b>Storage Instruction</b>	Store at -80°C. Aliquot to avoid repeated freezing and thawing.
<b>Note</b>	Best use within three months from the date of receipt of this protein.

## Applications

- Enzyme-linked Immunoabsorbent Assay
- Western Blot (Recombinant protein)
- Antibody Production
- Protein Array

## Gene Info — ATF2

Entrez GeneID [1386](#)

GeneBank Accession# [NM\\_001880](#)

Protein Accession# [NP\\_001871](#)

Gene Name ATF2

Gene Alias CRE-BP1, CREB2, HB16, MGC111558, TREB7

Gene Description activating transcription factor 2

Omim ID [123811](#)

Gene Ontology [Hyperlink](#)

**Gene Summary** This gene encodes a transcription factor that is a member of the leucine zipper family of DNA binding proteins. This protein binds to the cAMP-responsive element (CRE), an octameric palindromic. The protein forms a homodimer or heterodimer with c-Jun and stimulates CRE-dependent transcription. The protein is also a histone acetyltransferase (HAT) that specifically acetylates histones H2B and H4 in vitro; thus it may represent a class of sequence-specific factors that activate transcription by direct effects on chromatin components. Additional transcript variants have been identified but their biological validity has not been determined. [provided by RefSeq]

**Other Designations** OTTHUMP00000163262|activating transcription factor 2 splice variant ATF2-var2|cAMP responsive element binding protein 2, formerly

## Pathway

- [MAPK signaling pathway](#)

## Disease

- [Bipolar Disorder](#)
- [Cardiovascular Diseases](#)
- [Diabetes Mellitus](#)
- [Edema](#)
- [Genetic Predisposition to Disease](#)
- [Schizophrenia](#)
- [Tobacco Use Disorder](#)