

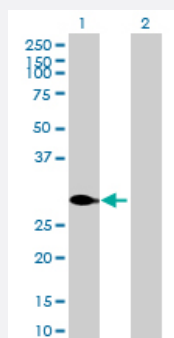
MaxPab®

# ATF2 purified MaxPab mouse polyclonal antibody (B01P)

Catalog # H00001386-B01P

Size 50 ug

## Applications

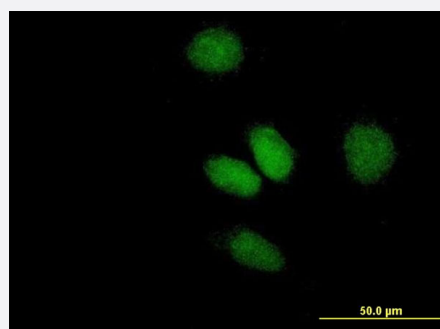


### Western Blot (Transfected lysate)

Western Blot analysis of ATF2 expression in transfected 293T cell line ([H00001386-T01](#)) by ATF2 MaxPab polyclonal antibody.

Lane 1: ATF2 transfected lysate(22.99 KDa).

Lane 2: Non-transfected lysate.



### Immunofluorescence

Immunofluorescence of purified MaxPab antibody to ATF2 on HeLa cell. [antibody concentration 10 ug/ml]

## Specification

Product Description	Mouse polyclonal antibody raised against a full-length human ATF2 protein.
Immunogen	ATF2 (AAH26175.1, 1 a.a. ~ 209 a.a) full-length human protein.
Sequence	MKFKLHVNSARQYKDLWNMSDDKPFLCTAPGCGQRFTNEDHLAVHKHKHEMTLKFGPARNDS VIVADQTPTPTRFLKNCEEVGLFNELASPFENEFFKASEDDIKKMPLDLSPLATPIIRSKIEEPSV ETTHQDSPLPHPESTTSDEKEVPLAQTAQPTSAIVRPASLQVPNVLLTSSDSSVIIQQAVPSPTSS TVITQAPSSNRPM
Host	Mouse
Reactivity	Human

Interspecies Antigen Sequence	Mouse (100); Rat (99)
Quality Control Testing	Antibody reactive against mammalian transfected lysate.
Storage Buffer	In 1x PBS, pH 7.4
Storage Instruction	Store at -20°C or lower. Aliquot to avoid repeated freezing and thawing.

## Applications

- Western Blot (Transfected lysate)

Western Blot analysis of ATF2 expression in transfected 293T cell line ([H00001386-T01](#)) by ATF2 MaxPab polyclonal antibody.

Lane 1: ATF2 transfected lysate(22.99 KDa).

Lane 2: Non-transfected lysate.

[Protocol Download](#)

- Immunofluorescence

Immunofluorescence of purified MaxPab antibody to ATF2 on HeLa cell. [antibody concentration 10 ug/ml]

## Gene Info — ATF2

Entrez GeneID	<a href="#">1386</a>
GeneBank Accession#	<a href="#">BC026175</a>
Protein Accession#	<a href="#">AAH26175.1</a>
Gene Name	ATF2
Gene Alias	CRE-BP1, CREB2, HB16, MGC111558, TREB7
Gene Description	activating transcription factor 2
Omim ID	<a href="#">123811</a>
Gene Ontology	<a href="#">Hyperlink</a>

**Gene Summary**

This gene encodes a transcription factor that is a member of the leucine zipper family of DNA binding proteins. This protein binds to the cAMP-responsive element (CRE), an octameric palindrome. The protein forms a homodimer or heterodimer with c-Jun and stimulates CRE-dependent transcription. The protein is also a histone acetyltransferase (HAT) that specifically acetylates histones H2B and H4 in vitro; thus it may represent a class of sequence-specific factors that activate transcription by direct effects on chromatin components. Additional transcript variants have been identified but their biological validity has not been determined. [provided by RefSeq]

**Other Designations**

OTTHUMP00000163262|activating transcription factor 2 splice variant ATF2-var2|cAMP responsive element binding protein 2, formerly

**Pathway**

- [MAPK signaling pathway](#)

**Disease**

- [Bipolar Disorder](#)
- [Cardiovascular Diseases](#)
- [Diabetes Mellitus](#)
- [Edema](#)
- [Genetic Predisposition to Disease](#)
- [Schizophrenia](#)
- [Tobacco Use Disorder](#)