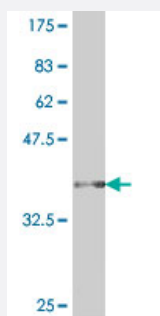


CPM polyclonal antibody (A01)

Catalog # H00001368-A01

Size 50 uL

Applications



Western Blot detection against Immunogen (37 KDa) .

Specification

Product Description	Mouse polyclonal antibody raised against a partial recombinant CPM.
Immunogen	CPM (NP_001005502, 251 a.a. ~ 349 a.a) partial recombinant protein with GST tag.
Sequence	GVTNGYSWYPLQGGMQDYNywaQCFEITLSCCKYPREEKLPSFWNNNKASLIEYIKQVHLGVK GQVFDQNGNPLPNVIVEVQDRKHICPYRTNKYG
Host	Mouse
Reactivity	Human
Interspecies Antigen Sequence	Mouse (92); Rat (92)
Quality Control Testing	Antibody Reactive Against Recombinant Protein. Western Blot detection against Immunogen (37 KDa) .
Storage Buffer	50 % glycerol
Storage Instruction	Store at -20°C or lower. Aliquot to avoid repeated freezing and thawing.

Applications

- Western Blot (Recombinant protein)

[Protocol Download](#)

- ELISA

Gene Info — CPM

Entrez GeneID [1368](#)

GeneBank Accession# [NM_001005502](#)

Protein Accession# [NP_001005502](#)

Gene Name CPM

Gene Alias -

Gene Description carboxypeptidase M

Omim ID [114860](#)

Gene Ontology [Hyperlink](#)

Gene Summary The protein encoded by this gene is a membrane-bound arginine/lysine carboxypeptidase. Its expression is associated with monocyte to macrophage differentiation. This encoded protein contains hydrophobic regions at the amino and carboxy termini and has 6 potential asparagine-linked glycosylation sites. The active site residues of carboxypeptidases A and B are conserved in this protein. Three alternatively spliced transcript variants encoding the same protein have been described for this gene. [provided by RefSeq]

Other Designations -

Disease

- [Asthma](#)
- [Depressive Disorder](#)
- [Psychomotor Performance](#)