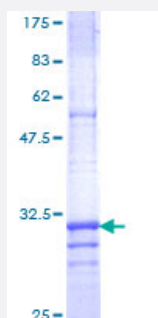


CLDN4 (Human) Recombinant Protein (Q01)

Catalog # H00001364-Q01

Size 25 ug, 10 ug

Applications



Specification

Product Description	Human CLDN4 partial ORF (NP_001296, 29 a.a. - 78 a.a.) recombinant protein with GST-tag at N-terminal.
Sequence	MWRVTAFIGSNMVTSTQTIWEGLWMNCVVQSTGQMQCKVYDSLLALPQDLQ
Host	Wheat Germ (in vitro)
Theoretical MW (kDa)	31.24
Preparation Method	in vitro wheat germ expression system
Purification	Glutathione Sepharose 4 Fast Flow
Quality Control Testing	12.5% SDS-PAGE Stained with Coomassie Blue.
Storage Buffer	50 mM Tris-HCl, 10 mM reduced Glutathione, pH=8.0 in the elution buffer.
Storage Instruction	Store at -80°C. Aliquot to avoid repeated freezing and thawing.
Note	Best use within three months from the date of receipt of this protein.

Applications

- Enzyme-linked Immunoabsorbent Assay
- Western Blot (Recombinant protein)
- Antibody Production
- Protein Array

Gene Info — CLDN4

Entrez GeneID	1364
GeneBank Accession#	NM_001305
Protein Accession#	NP_001296
Gene Name	CLDN4
Gene Alias	CPE-R, CPER, CPETR, CPETR1, WBSCR8, hCPE-R
Gene Description	claudin 4
Omim ID	602909
Gene Ontology	Hyperlink
Gene Summary	This gene encodes an integral membrane protein, which belongs to the claudin family. The protein is a component of tight junction strands and may play a role in internal organ development and function during pre- and postnatal life. This gene is deleted in Williams-Beuren syndrome, a neurodevelopmental disorder affecting multiple systems. [provided by RefSeq]
Other Designations	Clostridium perfringens enterotoxin receptor 1 Williams-Beuren syndrome chromosomal region 8 protein

Pathway

- [Cell adhesion molecules \(CAMs\)](#)
- [Leukocyte transendothelial migration](#)
- [Tight junction](#)