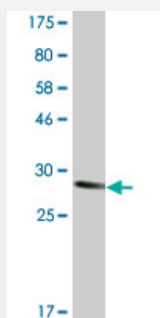


CLDN4 monoclonal antibody (M01A), clone 4A4

Catalog # H00001364-M01A

Size 200 uL

Applications



Western Blot detection against Immunogen (31.24 KDa) .

Specification

Product Description	Mouse monoclonal antibody raised against a partial recombinant CLDN4.
Immunogen	CLDN4 (NP_001296, 29 a.a. ~ 78 a.a) partial recombinant protein with GST tag. MW of the GST tag alone is 26 KDa.
Sequence	MWRVTAFIGSNVMTSQTWEGLWMNCVVQSTGQMCKVYDSLLALPQDLQ
Host	Mouse
Reactivity	Human
Isotype	IgG3 Kappa
Quality Control Testing	Antibody Reactive Against Recombinant Protein. Western Blot detection against Immunogen (31.24 KDa) .
Storage Buffer	In ascites fluid
Storage Instruction	Store at -20°C or lower. Aliquot to avoid repeated freezing and thawing.

Applications

- Western Blot (Recombinant protein)

[Protocol Download](#)

- ELISA

Gene Info — CLDN4

Entrez GeneID [1364](#)

GeneBank Accession# [NM_001305](#)

Protein Accession# [NP_001296](#)

Gene Name CLDN4

Gene Alias CPE-R, CPER, CPETR, CPETR1, WBSCR8, hCPE-R

Gene Description claudin 4

Omim ID [602909](#)

Gene Ontology [Hyperlink](#)

Gene Summary This gene encodes an integral membrane protein, which belongs to the claudin family. The protein is a component of tight junction strands and may play a role in internal organ development and function during pre- and postnatal life. This gene is deleted in Williams-Beuren syndrome, a neurodevelopmental disorder affecting multiple systems. [provided by RefSeq]

Other Designations Clostridium perfringens enterotoxin receptor 1|Williams-Beuren syndrome chromosomal region 8 protein

Pathway

- [Cell adhesion molecules \(CAMs\)](#)
- [Leukocyte transendothelial migration](#)
- [Tight junction](#)