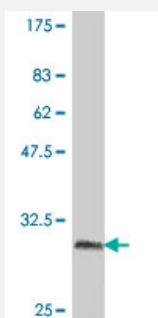


CLDN4 polyclonal antibody (A01)

Catalog # H00001364-A01

Size 50 uL

Applications



Western Blot detection against Immunogen (31.61 KDa) .

Specification

Product Description	Mouse polyclonal antibody raised against a partial recombinant CLDN4.
Immunogen	CLDN4 (NP_001296, 29 a.a. ~ 78 a.a) partial recombinant protein with GST tag.
Sequence	MWRVTAFIGSNMVTSTQTIWEGLWMNCVVQSTGQMCKVYDSLALPQDLQ
Host	Mouse
Reactivity	Human
Quality Control Testing	Antibody Reactive Against Recombinant Protein. Western Blot detection against Immunogen (31.61 KDa) .
Storage Buffer	50 % glycerol
Storage Instruction	Store at -20°C or lower. Aliquot to avoid repeated freezing and thawing.

Applications

- Western Blot (Recombinant protein)

[Protocol Download](#)

- ELISA

Gene Info — CLDN4

Entrez GeneID	1364
GeneBank Accession#	NM_001305
Protein Accession#	NP_001296
Gene Name	CLDN4
Gene Alias	CPE-R, CPER, CPETR, CPETR1, WBSCR8, hCPE-R
Gene Description	claudin 4
Omim ID	602909
Gene Ontology	Hyperlink
Gene Summary	This gene encodes an integral membrane protein, which belongs to the claudin family. The protein is a component of tight junction strands and may play a role in internal organ development and function during pre- and postnatal life. This gene is deleted in Williams-Beuren syndrome, a neurodevelopmental disorder affecting multiple systems. [provided by RefSeq]
Other Designations	Clostridium perfringens enterotoxin receptor 1 Williams-Beuren syndrome chromosomal region 8 protein

Pathway

- [Cell adhesion molecules \(CAMs\)](#)
- [Leukocyte transendothelial migration](#)
- [Tight junction](#)