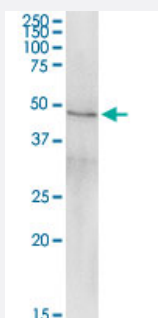


CPB1 (Human) IP-WB Antibody Pair

Catalog # H00001360-PW3

Size 1 Set

Applications



Immunoprecipitation of CPB1 transfected lysate using rabbit polyclonal anti-CPB1 and Protein A Magnetic Bead ([U0007](#)), and immunoblotted with mouse purified polyclonal anti-CPB1.

Specification

Product Description

This IP-WB antibody pair set comes with one antibody for immunoprecipitation and another to detect the precipitated protein in western blot.

Reactivity

Human

Quality Control Testing

Immunoprecipitation-Western Blot (IP-WB)

Immunoprecipitation of CPB1 transfected lysate using rabbit polyclonal anti-CPB1 and Protein A Magnetic Bead ([U0007](#)), and immunoblotted with mouse purified polyclonal anti-CPB1.

Supplied Product

Antibody pair set content:

1. Antibody pair for IP: rabbit polyclonal anti-CPB1 (300 ul)
2. Antibody pair for WB: mouse purified polyclonal anti-CPB1 (50 ug)

Storage Instruction

Store reagents of the antibody pair set at -20°C or lower. Please aliquot to avoid repeated freeze thaw cycle. Reagents should be returned to -20°C storage immediately after use.

Applications

- Immunoprecipitation-Western Blot

[Protocol Download](#)

Gene Info — CPB1

Entrez GeneID	1360
Gene Name	CPB1
Gene Alias	DKFZp779K1333, PASP, PCPB
Gene Description	carboxypeptidase B1 (tissue)
Omim ID	114852
Gene Ontology	Hyperlink
Gene Summary	Three different procarboxypeptidases A and two different procarboxypeptidases B have been isolated. The B1 and B2 forms differ from each other mainly in isoelectric point. Carboxypeptidase B1 is a highly tissue-specific protein and is a useful serum marker for acute pancreatitis and dysfunction of pancreatic transplants. It is not elevated in pancreatic carcinoma. [provided by RefSeq]
Other Designations	pancreas-specific protein pancreatic carboxypeptidase B1

Disease

- [Tobacco Use Disorder](#)