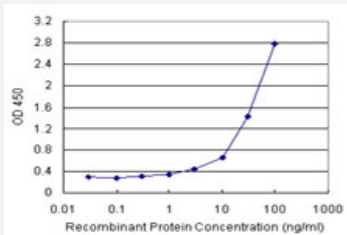


CPB1 (Human) Matched Antibody Pair

Catalog # H00001360-AP11

Size 1 Set

Applications



Sandwich ELISA detection sensitivity ranging from 0.3 ng/ml to 100 ng/ml.

Specification

Product Description	This antibody pair set comes with a matched antibody pair to detect and quantify the protein level of human CPB1.
Reactivity	Human
Quality Control Testing	Standard curve using recombinant protein (H00001360-P01) as an analyte. Sandwich ELISA detection sensitivity ranging from 0.3 ng/ml to 100 ng/ml.
Supplied Product	Antibody pair set content: 1. Capture antibody: rabbit MaxPab® affinity purified polyclonal anti-CPB1 (100 ug) 2. Detection antibody: mouse monoclonal anti-CPB1, IgG2a Kappa (20 ug) *Reagents are sufficient for at least 1-2 x 96 well plates using recommended protocols.
Storage Instruction	Store reagents of the antibody pair set at -20°C or lower. Please aliquot to avoid repeated freeze thaw cycle. Reagents should be returned to -20°C storage immediately after use.

Applications

- ELISA Pair (Recombinant protein)

[Protocol Download](#)

Gene Info — CPB1

Entrez GeneID [1360](#)**Gene Name** CPB1**Gene Alias** DKFZp779K1333, PASP, PCPB**Gene Description** carboxypeptidase B1 (tissue)**Omim ID** [114852](#)**Gene Ontology** [Hyperlink](#)

Gene Summary Three different procarboxypeptidases A and two different procarboxypeptidases B have been isolated. The B1 and B2 forms differ from each other mainly in isoelectric point. Carboxypeptidase B1 is a highly tissue-specific protein and is a useful serum marker for acute pancreatitis and dysfunction of pancreatic transplants. It is not elevated in pancreatic carcinoma. [provided by RefSeq]

Other Designations pancreas-specific protein|pancreatic carboxypeptidase B1

Disease

- [Tobacco Use Disorder](#)