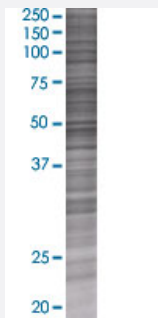


CPA3 293T Cell Transient Overexpression Lysate(Denatured)

Catalog # H00001359-T01

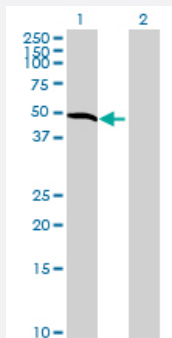
Size 100 uL

Applications



SDS-PAGE Gel

CPA3 transfected lysate.



Western Blot

Lane 1: CPA3 transfected lysate (45.98 KDa)

Lane 2: Non-transfected lysate.

Specification

Transfected Cell Line	293T
Plasmid	pCMV-CPA3 full-length
Host	Human
Theoretical MW (kDa)	45.98
Interspecies Antigen Sequence	Mouse (82); Rat (83)

Quality Control Testing

Transient overexpression cell lysate was tested with Anti-CPA3 antibody ([H00001359-B01](#)) by Western Blots.
 SDS-PAGE Gel
 CPA3 transfected lysate.
 Western Blot
 Lane 1: CPA3 transfected lysate (45.98 KDa)
 Lane 2: Non-transfected lysate.

Storage Buffer

1X Sample Buffer (50 mM Tris-HCl, 2% SDS, 10% glycerol, 300 mM 2-mercaptoethanol, 0.01% Bromophenol blue)

Storage Instruction

Store at -80°C. Aliquot to avoid repeated freezing and thawing.

Applications

- Western Blot

Gene Info — CPA3

Entrez GeneID

[1359](#)

GeneBank Accession#

[NM_001870.1](#)

Protein Accession#

[NP_001861.1](#)

Gene Name

CPA3

Gene Alias

-

Gene Description

carboxypeptidase A3 (mast cell)

Omim ID

[114851](#)

Gene Ontology

[Hyperlink](#)

Gene Summary

Three different forms of human pancreatic procarboxypeptidase A have been isolated. This gene encodes a form which is obtained as a binary complex of a procarboxypeptidase A with proproteinase E and functions as a secretory granule metalloexopeptidase. [provided by RefSeq]

Other Designations

mast cell carboxypeptidase A3

Pathway

- [Renin-angiotensin system](#)