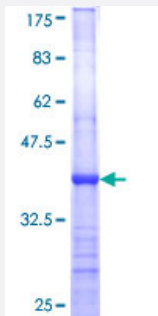


CPA3 (Human) Recombinant Protein (Q01)

Catalog # H00001359-Q01

Size 25 ug, 10 ug

Applications



Specification

Product Description	Human CPA3 partial ORF (NP_001861, 318 a.a. - 417 a.a.) recombinant protein with GST-tag at N-terminal.
Sequence	SKLPPNHEDLAKVAKIGTDVLSTRYETRYIYGPIESTYPIGSSLDWAYDLGIKHTFAFELRDKGKFG FLLPESRIKPTCRETMLAVKFIKYLKHTS
Host	Wheat Germ (in vitro)
Theoretical MW (kDa)	36.74
Interspecies Antigen Sequence	Mouse (87); Rat (89)
Preparation Method	in vitro wheat germ expression system
Purification	Glutathione Sepharose 4 Fast Flow
Quality Control Testing	12.5% SDS-PAGE Stained with Coomassie Blue.
Storage Buffer	50 mM Tris-HCl, 10 mM reduced Glutathione, pH=8.0 in the elution buffer.
Storage Instruction	Store at -80°C. Aliquot to avoid repeated freezing and thawing.
Note	Best use within three months from the date of receipt of this protein.

Applications

- Enzyme-linked Immunoabsorbent Assay
- Western Blot (Recombinant protein)
- Antibody Production
- Protein Array

Gene Info — CPA3

Entrez GeneID	1359
GeneBank Accession#	NM_001870
Protein Accession#	NP_001861
Gene Name	CPA3
Gene Alias	-
Gene Description	carboxypeptidase A3 (mast cell)
Omim ID	114851
Gene Ontology	Hyperlink
Gene Summary	Three different forms of human pancreatic procarboxypeptidase A have been isolated. This gene encodes a form which is obtained as a binary complex of a procarboxypeptidase A with proproteinase E and functions as a secretory granule metalloexopeptidase. [provided by RefSeq]
Other Designations	mast cell carboxypeptidase A3

Pathway

- [Renin-angiotensin system](#)