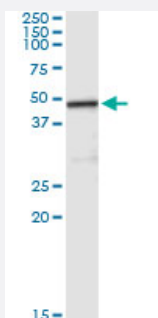


CPA2 (Human) IP-WB Antibody Pair

Catalog # H00001358-PW2

Size 1 Set

Applications



Immunoprecipitation of CPA2 transfected lysate using mouse monoclonal anti-CPA2 and Protein A Magnetic Bead ([U0007](#)), and immunoblotted with rabbit polyclonal anti-CPA2.

Specification

Product Description	This IP-WB antibody pair set comes with one antibody for immunoprecipitation and another to detect the precipitated protein in western blot.
Reactivity	Human
Quality Control Testing	Immunoprecipitation-Western Blot (IP-WB) Immunoprecipitation of CPA2 transfected lysate using mouse monoclonal anti-CPA2 and Protein A Magnetic Bead (U0007), and immunoblotted with rabbit polyclonal anti-CPA2.
Supplied Product	Antibody pair set content: 1. Antibody pair for IP: mouse monoclonal anti-CPA2 (300 ug) 2. Antibody pair for WB: rabbit polyclonal anti-CPA2 (50 ul)
Storage Instruction	Store reagents of the antibody pair set at -20°C or lower. Please aliquot to avoid repeated freeze thaw cycle. Reagents should be returned to -20°C storage immediately after use.

Applications

- Immunoprecipitation-Western Blot

[Protocol Download](#)

Gene Info — CPA2

Entrez GeneID [1358](#)**Gene Name** CPA2**Gene Alias** -**Gene Description** carboxypeptidase A2 (pancreatic)**Omim ID** [600688](#)**Gene Ontology** [Hyperlink](#)

Gene Summary Three different forms of human pancreatic procarboxypeptidase A have been isolated. The encoded protein represents the A2 form, which is a monomeric protein with different biochemical properties from the A1 and A3 forms. The A2 form of pancreatic procarboxypeptidase acts on aromatic C-terminal residues and is a secreted protein. [provided by RefSeq]

Other Designations -

Disease

- [Autistic Disorder](#)
- [Genetic Predisposition to Disease](#)
- [Tobacco Use Disorder](#)