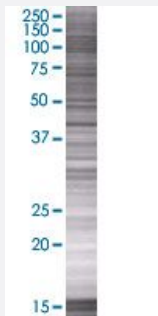


CPA1 293T Cell Transient Overexpression Lysate(Denatured)

Catalog # H00001357-T01

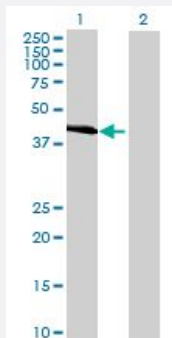
Size 100 uL

Applications



SDS-PAGE Gel

CPA1 transfected lysate.



Western Blot

Lane 1: CPA1 transfected lysate (46.2 KDa)

Lane 2: Non-transfected lysate.

Specification

Transfected Cell Line 293T

Plasmid pCMV-CPA1 full-length

Host Human

Theoretical MW (kDa) 46.2

Quality Control Testing Transient overexpression cell lysate was tested with Anti-CPA1 antibody ([H00001357-B01](#)) by Western Blots.
 SDS-PAGE Gel
 CPA1 transfected lysate.
 Western Blot
 Lane 1: CPA1 transfected lysate (46.2 KDa)
 Lane 2: Non-transfected lysate.

Storage Buffer	1X Sample Buffer (50 mM Tris-HCl, 2% SDS, 10% glycerol, 300 mM 2-mercaptoethanol, 0.01% Bromophenol blue)
Storage Instruction	Store at -80°C. Aliquot to avoid repeated freezing and thawing.

Applications

- Western Blot

Gene Info — CPA1

Entrez GeneID	1357
GeneBank Accession#	NM_001868.1
Protein Accession#	NP_001859.1
Gene Name	CPA1
Gene Alias	CPA
Gene Description	carboxypeptidase A1 (pancreatic)
Omim ID	114850
Gene Ontology	Hyperlink
Gene Summary	Three different forms of human pancreatic procarboxypeptidase A have been isolated. This gene encodes a monomeric pancreatic exopeptidase involved in zymogen inhibition. [provided by RefSeq]
Other Designations	pancreatic carboxypeptidase A1