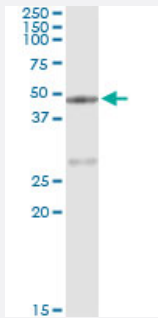


CPA1 (Human) IP-WB Antibody Pair

Catalog # H00001357-PW2

Size 1 Set

Applications



Immunoprecipitation of CPA1 transfected lysate using mouse monoclonal anti-CPA1 and Protein A Magnetic Bead ([U0007](#)), and immunoblotted with rabbit polyclonal anti-CPA1.

Specification

Product Description	This IP-WB antibody pair set comes with one antibody for immunoprecipitation and another to detect the precipitated protein in western blot.
Reactivity	Human
Quality Control Testing	Immunoprecipitation-Western Blot (IP-WB) Immunoprecipitation of CPA1 transfected lysate using mouse monoclonal anti-CPA1 and Protein A Magnetic Bead (U0007), and immunoblotted with rabbit polyclonal anti-CPA1.
Supplied Product	Antibody pair set content: 1. Antibody pair for IP: mouse monoclonal anti-CPA1 (300 ug) 2. Antibody pair for WB: rabbit polyclonal anti-CPA1 (50 ul)
Storage Instruction	Store reagents of the antibody pair set at -20°C or lower. Please aliquot to avoid repeated freeze thaw cycle. Reagents should be returned to -20°C storage immediately after use.

Applications

- Immunoprecipitation-Western Blot

[Protocol Download](#)

Gene Info — CPA1

Entrez GeneID	1357
Gene Name	CPA1
Gene Alias	CPA
Gene Description	carboxypeptidase A1 (pancreatic)
Omim ID	114850
Gene Ontology	Hyperlink
Gene Summary	Three different forms of human pancreatic procarboxypeptidase A have been isolated. This gene encodes a monomeric pancreatic exopeptidase involved in zymogen inhibition. [provided by Ref Seq]
Other Designations	pancreatic carboxypeptidase A1