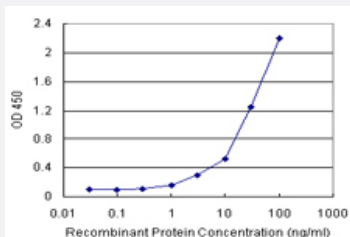


CPA1 (Human) Matched Antibody Pair

Catalog # H00001357-AP21

Size 1 Set

Applications



Sandwich ELISA detection sensitivity ranging from 1 ng/ml to 100 ng/ml.

Specification

Product Description	This antibody pair set comes with a matched antibody pair to detect and quantify the protein level of human CPA1.
Reactivity	Human
Quality Control Testing	Standard curve using recombinant protein (H00001357-P01) as an analyte. Sandwich ELISA detection sensitivity ranging from 1 ng/ml to 100 ng/ml.
Supplied Product	Antibody pair set content: 1. Capture antibody: rabbit MaxPab® affinity purified polyclonal anti-CPA1 (100 ug) 2. Detection antibody: mouse purified polyclonal anti-CPA1 (20 ug) *Reagents are sufficient for at least 1-2 x 96 well plates using recommended protocols.
Storage Instruction	Store reagents of the antibody pair set at -20°C or lower. Please aliquot to avoid repeated freeze thaw cycle. Reagents should be returned to -20°C storage immediately after use.

Applications

- ELISA Pair (Recombinant protein)

[Protocol Download](#)

Gene Info — CPA1

Entrez GeneID [1357](#)**Gene Name** CPA1**Gene Alias** CPA**Gene Description** carboxypeptidase A1 (pancreatic)**Omim ID** [114850](#)**Gene Ontology** [Hyperlink](#)**Gene Summary** Three different forms of human pancreatic procarboxypeptidase A have been isolated. This gene encodes a monomeric pancreatic exopeptidase involved in zymogen inhibition. [provided by Ref Seq]**Other Designations** pancreatic carboxypeptidase A1