

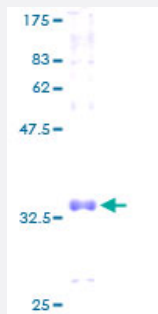
Full-Length

COX7A1 (Human) Recombinant Protein (P01)

Catalog # H00001346-P01

Size 25 ug, 10 ug

Applications



Specification

Product Description	Human COX7A1 full-length ORF (AAH02757, 1 a.a. - 79 a.a.) recombinant protein with GST-tag at N-terminal.
Sequence	MQALRVSQALIRSFSSSTARNRFQNRVREKQKLFQEDNDIPLYLKGGVDNILYRVMTLCLGGTVYS LYSLGWASFPRN
Host	Wheat Germ (in vitro)
Theoretical MW (kDa)	34.43
Interspecies Antigen Sequence	Mouse (72)
Preparation Method	in vitro wheat germ expression system
Purification	Glutathione Sepharose 4 Fast Flow
Quality Control Testing	12.5% SDS-PAGE Stained with Coomassie Blue.
Storage Buffer	50 mM Tris-HCl, 10 mM reduced Glutathione, pH=8.0 in the elution buffer.
Storage Instruction	Store at -80°C. Aliquot to avoid repeated freezing and thawing.
Note	Best use within three months from the date of receipt of this protein.

Applications

- Enzyme-linked Immunoabsorbent Assay
- Western Blot (Recombinant protein)
- Antibody Production
- Protein Array

Gene Info — COX7A1

Entrez GeneID [1346](#)

GeneBank Accession# [BC002757](#)

Protein Accession# [AAH02757](#)

Gene Name COX7A1

Gene Alias COX7A, COX7AH, COX7AM

Gene Description cytochrome c oxidase subunit VIIa polypeptide 1 (muscle)

Omim ID [123995](#)

Gene Ontology [Hyperlink](#)

Gene Summary Cytochrome c oxidase (COX), the terminal component of the mitochondrial respiratory chain, catalyzes the electron transfer from reduced cytochrome c to oxygen. This component is a heteromeric complex consisting of 3 catalytic subunits encoded by mitochondrial genes and multiple structural subunits encoded by nuclear genes. The mitochondrially-encoded subunits function in electron transfer, and the nuclear-encoded subunits may function in the regulation and assembly of the complex. This nuclear gene encodes polypeptide 1 (muscle isoform) of subunit VIIa and the polypeptide 1 is present only in muscle tissues. Other polypeptides of subunit VIIa are present in both muscle and nonmuscle tissues, and are encoded by different genes. [provided by RefSeq]

Other Designations OTTHUMP00000045828|cytochrome c oxidase subunit VIIa heart/muscle isoform

Pathway

- [Cardiac muscle contraction](#)

- [Oxidative phosphorylation](#)

Disease

- [Cardiovascular Diseases](#)
- [Diabetes Mellitus](#)
- [Edema](#)
- [Genetic Predisposition to Disease](#)
- [Insulin Resistance](#)