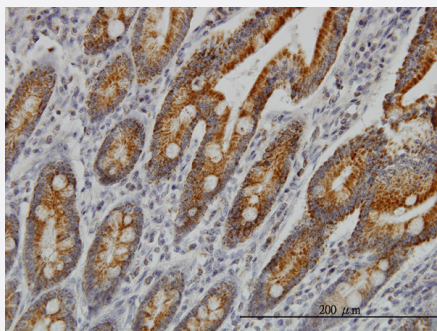


COX6C monoclonal antibody (M03), clone S51

Catalog # H00001345-M03

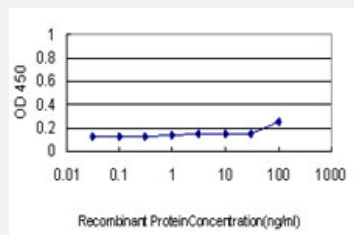
Size 100 ug

Applications



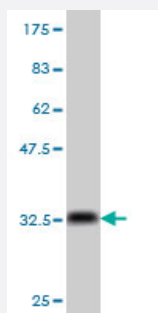
Immunohistochemistry (Formalin/PFA-fixed paraffin-embedded sections)

Immunoperoxidase of monoclonal antibody to COX6C on formalin-fixed paraffin-embedded human small Intestine. [antibody concentration 1 ug/ml]



Sandwich ELISA (Recombinant protein)

Detection limit for recombinant GST tagged COX6C is approximately 1ng/ml as a capture antibody.



Western Blot detection against Immunogen (33.99 KDa) .

Specification

Product Description

Mouse monoclonal antibody raised against a full length recombinant COX6C.

Immunogen	COX6C (AAH00187, 1 a.a. ~ 75 a.a) full-length recombinant protein with GST tag. MW of the GST tag alone is 26 KDa.
Sequence	MAPEVLPKPRMRGLLARRLRNHMAVAFVLSLGVAALYKFRVADQRKKAYADFYRNYDVMKDFE EMRKAGIFQSVK
Host	Mouse
Reactivity	Human
Isotype	IgG1 Kappa
Quality Control Testing	Antibody Reactive Against Recombinant Protein. Western Blot detection against Immunogen (33.99 KDa) .
Storage Buffer	In 1x PBS, pH 7.4
Storage Instruction	Store at -20°C or lower. Aliquot to avoid repeated freezing and thawing.

Applications

- Western Blot (Recombinant protein)

[Protocol Download](#)

- Immunohistochemistry (Formalin/PFA-fixed paraffin-embedded sections)

Immunoperoxidase of monoclonal antibody to COX6C on formalin-fixed paraffin-embedded human small Intestine. [antibody concentration 1 ug/ml]

[Protocol Download](#)

- Sandwich ELISA (Recombinant protein)

Detection limit for recombinant GST tagged COX6C is approximately 1ng/ml as a capture antibody.

[Protocol Download](#)

- ELISA

Gene Info — COX6C

Entrez GeneID	1345
GeneBank Accession#	BC000187

Protein Accession#	AAH00187
Gene Name	COX6C
Gene Alias	-
Gene Description	cytochrome c oxidase subunit VIc
Omim ID	124090
Gene Ontology	Hyperlink
Gene Summary	<p>Cytochrome c oxidase (COX), the terminal enzyme of the mitochondrial respiratory chain, catalyzes the electron transfer from reduced cytochrome c to oxygen. It is a heteromeric complex consisting of 3 catalytic subunits encoded by mitochondrial genes and multiple structural subunits encoded by nuclear genes. The mitochondrially-encoded subunits function in electron transfer, and the nuclear-encoded subunits may be involved in the regulation and assembly of the complex. This nuclear gene encodes subunit VIc, which has 77% amino acid sequence identity with mouse COX subunit VIc. This gene is up-regulated in prostate cancer cells. A pseudogene COX6CP1 has been found on chromosomes 16p12. [provided by RefSeq]</p>
Other Designations	cytochrome c oxidase subunit VIc preprotein

Pathway

- [Cardiac muscle contraction](#)
- [Metabolic pathways](#)
- [Oxidative phosphorylation](#)

Disease

- [Genetic Predisposition to Disease](#)
- [Prostatic Neoplasms](#)