

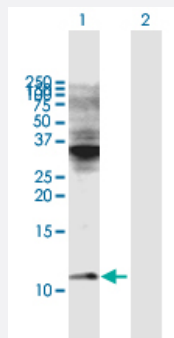
MaxPab®

COX6C purified MaxPab mouse polyclonal antibody (B01P)

Catalog # H00001345-B01P

Size 50 ug

Applications



Western Blot (Transfected lysate)

Western Blot analysis of COX6C expression in transfected 293T cell line ([H00001345-T01](#)) by COX6C MaxPab polyclonal antibody.

Lane 1: COX6C transfected lysate(8.8 KDa).

Lane 2: Non-transfected lysate.

Specification

Product Description	Mouse polyclonal antibody raised against a full-length human COX6C protein.
Immunogen	COX6C (NP_004365.1, 1 a.a. ~ 75 a.a) full-length human protein.
Sequence	MAPEVLPKPRMRGLLARRLRNHMAVAFVLSLGVAALYKFRVADQRKKAYADFYRNYDVMKDFE EMRKAGIFQSVK
Host	Mouse
Reactivity	Human
Quality Control Testing	Antibody reactive against mammalian transfected lysate.
Storage Buffer	In 1x PBS, pH 7.4
Storage Instruction	Store at -20°C or lower. Aliquot to avoid repeated freezing and thawing.

Applications

- Western Blot (Transfected lysate)

Western Blot analysis of COX6C expression in transfected 293T cell line ([H00001345-T01](#)) by COX6C MaxPab polyclonal antibody.

Lane 1: COX6C transfected lysate(8.8 KDa).

Lane 2: Non-transfected lysate.

[Protocol Download](#)

Gene Info — COX6C

Entrez GeneID [1345](#)

GeneBank Accession# [NM_004374.2](#)

Protein Accession# [NP_004365.1](#)

Gene Name COX6C

Gene Alias -

Gene Description cytochrome c oxidase subunit VIc

Omim ID [124090](#)

Gene Ontology [Hyperlink](#)

Gene Summary Cytochrome c oxidase (COX), the terminal enzyme of the mitochondrial respiratory chain, catalyzes the electron transfer from reduced cytochrome c to oxygen. It is a heteromeric complex consisting of 3 catalytic subunits encoded by mitochondrial genes and multiple structural subunits encoded by nuclear genes. The mitochondrially-encoded subunits function in electron transfer, and the nuclear-encoded subunits may be involved in the regulation and assembly of the complex. This nuclear gene encodes subunit VIc, which has 77% amino acid sequence identity with mouse COX subunit VIc. This gene is up-regulated in prostate cancer cells. A pseudogene COX6CP1 has been found on chromosomes 16p12. [provided by RefSeq]

Other Designations cytochrome c oxidase subunit VIc preprotein

Pathway

- [Cardiac muscle contraction](#)
- [Metabolic pathways](#)
- [Oxidative phosphorylation](#)

Disease

- [Genetic Predisposition to Disease](#)
- [Prostatic Neoplasms](#)