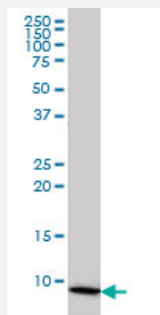


COX6B1 monoclonal antibody (M01), clone 5D3

Catalog # H00001340-M01

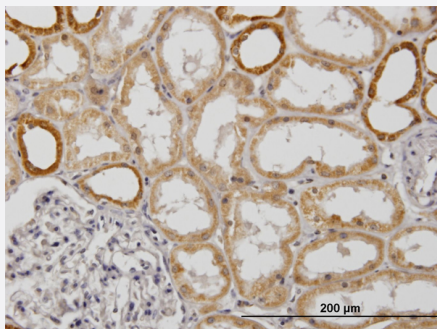
Size 50 ug

Applications



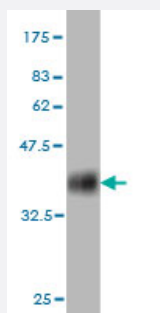
Western Blot (Cell lysate)

COX6B1 monoclonal antibody (M01), clone 5D3 Western Blot analysis of COX6B1 expression in HL-60 (Cat # L014V1).



Immunohistochemistry (Formalin/PFA-fixed paraffin-embedded sections)

Immunoperoxidase of monoclonal antibody to COX6B1 on formalin-fixed paraffin-embedded human kidney. [antibody concentration 0.3 ug/ml]



Western Blot detection against Immunogen (35.2 KDa) .

Specification

Product Description

Mouse monoclonal antibody raised against a partial recombinant COX6B1.

Immunogen	COX6B1 (NP_001854, 1 a.a. ~ 86 a.a) partial recombinant protein with GST tag. MW of the GST tag alone is 26 KDa.
Sequence	MAEDMETKIKNYKTAPFDSRFPNQNRNCWQNYLDFHRCQKAMTAKGGDISVCEWYQRVYQS LCPTSWVTDWDEQRAEGTFPGKI
Host	Mouse
Reactivity	Human
Isotype	IgG1 Kappa
Quality Control Testing	Antibody Reactive Against Recombinant Protein. Western Blot detection against Immunogen (35.2 KDa) .
Storage Buffer	In 1x PBS, pH 7.4
Storage Instruction	Store at -20°C or lower. Aliquot to avoid repeated freezing and thawing.

Applications

- Western Blot (Cell lysate)

COX6B1 monoclonal antibody (M01), clone 5D3 Western Blot analysis of COX6B1 expression in HL-60 (Cat # L014V1).

[Protocol Download](#)

- Western Blot (Recombinant protein)

[Protocol Download](#)

- Immunohistochemistry (Formalin/PFA-fixed paraffin-embedded sections)

Immunoperoxidase of monoclonal antibody to COX6B1 on formalin-fixed paraffin-embedded human kidney. [antibody concentration 0.3 ug/ml]

[Protocol Download](#)

- ELISA

Gene Info — COX6B1

Entrez GeneID	1340
GeneBank Accession#	NM_001863

Protein Accession#	NP_001854
Gene Name	COX6B1
Gene Alias	COX6B, COXG
Gene Description	cytochrome c oxidase subunit Vlb polypeptide 1 (ubiquitous)
Omim ID	124089
Gene Ontology	Hyperlink
Gene Summary	<p>Cytochrome c oxidase (COX), the terminal enzyme of the mitochondrial respiratory chain, catalyzes the electron transfer from reduced cytochrome c to oxygen. It is a heteromeric complex consisting of 3 catalytic subunits encoded by mitochondrial genes and multiple structural subunits encoded by nuclear genes. The mitochondrially-encoded subunits function in electron transfer, and the nuclear-encoded subunits may be involved in the regulation and assembly of the complex. This nuclear gene encodes subunit Vlb. Three pseudogenes COX6BP-1, COX6BP-2 and COX6BP-3 have been found on chromosomes 7, 17 and 22q13.1-13.2, respectively. [provided by RefSeq]</p>
Other Designations	cytochrome c oxidase subunit Vlb human cytochrome oxidase subunit Vlb

Pathway

- [Cardiac muscle contraction](#)
- [Metabolic pathways](#)
- [Oxidative phosphorylation](#)