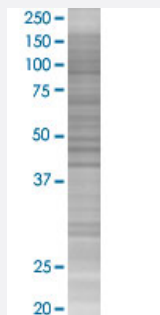


COX4I1 293T Cell Transient Overexpression Lysate(Denatured)

Catalog # H00001327-T02

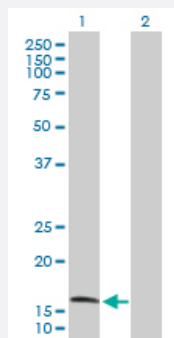
Size 100 uL

Applications



SDS-PAGE Gel

COX4I1 transfected lysate.



Western Blot

Lane 1: COX4I1 transfected lysate (19.60 KDa)

Lane 2: Non-transfected lysate.

Specification

Transfected Cell Line 293T

Plasmid pCMV-COX4I1 full-length

Host Human

Theoretical MW (kDa) 19.6

Quality Control Testing Transient overexpression cell lysate was tested with Anti-COX4I1 antibody ([H00001327-D01P](#)) by Western Blots.
SDS-PAGE Gel
COX4I1 transfected lysate.
Western Blot
Lane 1: COX4I1 transfected lysate (19.60 KDa)
Lane 2: Non-transfected lysate.

Storage Buffer

1X Sample Buffer (50 mM Tris-HCl, 2% SDS, 10% glycerol, 300 mM 2-mercaptoethanol, 0.01% Bromophenol blue)

Storage Instruction

Store at -80°C. Aliquot to avoid repeated freezing and thawing.

Applications

- Western Blot

Gene Info — COX4I1

Entrez GeneID[1327](#)**GeneBank Accession#**[NM_001861.2](#)**Protein Accession#**[NP_001852.1](#)**Gene Name**

COX4I1

Gene Alias

COX4, COXIV, MGC72016

Gene Description

cytochrome c oxidase subunit IV isoform 1

Omim ID[123864](#)**Gene Ontology**[Hyperlink](#)**Gene Summary**

Cytochrome c oxidase (COX) is the terminal enzyme of the mitochondrial respiratory chain. It is a multi-subunit enzyme complex that couples the transfer of electrons from cytochrome c to molecular oxygen and contributes to a proton electrochemical gradient across the inner mitochondrial membrane. The complex consists of 13 mitochondrial- and nuclear-encoded subunits. The mitochondrially-encoded subunits perform the electron transfer and proton pumping activities. The functions of the nuclear-encoded subunits are unknown but they may play a role in the regulation and assembly of the complex. This gene encodes the nuclear-encoded subunit IV isoform 1 of the human mitochondrial respiratory chain enzyme. It is located at the 3' of the NOC4 (neighbor of COX4) gene in a head-to-head orientation, and shares a promoter with it. [provided by RefSeq]

Other Designations

-

Pathway

- [Cardiac muscle contraction](#)
- [Metabolic pathways](#)

- [Oxidative phosphorylation](#)