

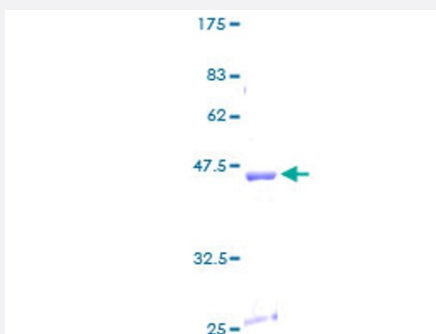
Full-Length

COX4I1 (Human) Recombinant Protein (P01)

Catalog # H00001327-P01

Size 25 ug, 10 ug

Applications



Specification

Product Description

Human COX4I1 full-length ORF (AAH08704, 1 a.a. - 169 a.a.) recombinant protein with GST-tag at N-terminal.

Sequence

MLATRVFSLVGKRAISTSVCVRAHESVVKSEDFSLPAYMDRRDHPLPEVAHVKHLSASQKALKE
KEKASWSSLSMDEKVELYRIKFESFAEMNRGSNEWKTVVGGAMFFIGFTALVIMWQKHVYGP
LPQSFDKEWVAKQTKRMLDMKVNPIQGLASKWDYEKNEWKK

Host

Wheat Germ (in vitro)

Theoretical MW (kDa)

44.33

Preparation Method

[in vitro wheat germ expression system](#)

Purification

Glutathione Sepharose 4 Fast Flow

Quality Control Testing

12.5% SDS-PAGE Stained with Coomassie Blue.

Storage Buffer

50 mM Tris-HCl, 10 mM reduced Glutathione, pH=8.0 in the elution buffer.

Storage Instruction

Store at -80°C. Aliquot to avoid repeated freezing and thawing.

Note

Best use within three months from the date of receipt of this protein.

Applications

- Enzyme-linked Immunoabsorbent Assay
- Western Blot (Recombinant protein)
- Antibody Production
- Protein Array

Gene Info — COX4I1

Entrez GeneID [1327](#)

GeneBank Accession# [BC008704](#)

Protein Accession# [AAH08704](#)

Gene Name COX4I1

Gene Alias COX4, COXIV, MGC72016

Gene Description cytochrome c oxidase subunit IV isoform 1

Omim ID [123864](#)

Gene Ontology [Hyperlink](#)

Gene Summary Cytochrome c oxidase (COX) is the terminal enzyme of the mitochondrial respiratory chain. It is a multi-subunit enzyme complex that couples the transfer of electrons from cytochrome c to molecular oxygen and contributes to a proton electrochemical gradient across the inner mitochondrial membrane. The complex consists of 13 mitochondrial- and nuclear-encoded subunits. The mitochondrially-encoded subunits perform the electron transfer and proton pumping activities. The functions of the nuclear-encoded subunits are unknown but they may play a role in the regulation and assembly of the complex. This gene encodes the nuclear-encoded subunit IV isoform 1 of the human mitochondrial respiratory chain enzyme. It is located at the 3' of the NOC4 (neighbor of COX4) gene in a head-to-head orientation, and shares a promoter with it. [provided by RefSeq]

Other Designations -

Pathway

- [Cardiac muscle contraction](#)
- [Metabolic pathways](#)
- [Oxidative phosphorylation](#)