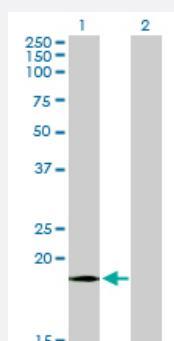


# COX4I1 monoclonal antibody (M08), clone 4A10

Catalog # H00001327-M08

Size 100 ug

## Applications

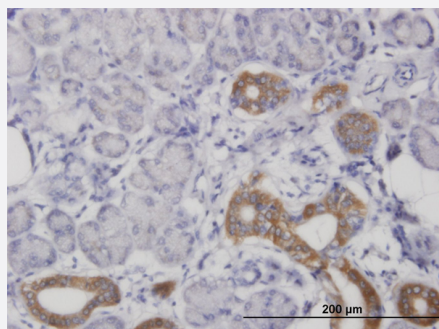


### Western Blot (Transfected lysate)

Western Blot analysis of COX4I1 expression in transfected 293T cell line by COX4I1 monoclonal antibody (M08), clone 4A10.

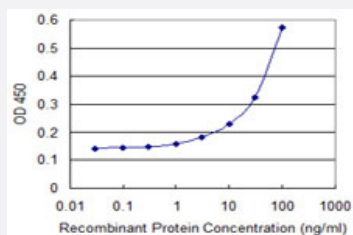
Lane 1: COX4I1 transfected lysate(19.6 kDa).

Lane 2: Non-transfected lysate.



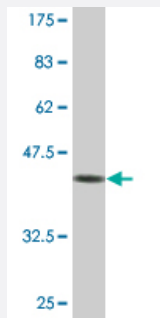
### Immunohistochemistry (Formalin/PFA-fixed paraffin-embedded sections)

Immunoperoxidase of monoclonal antibody to COX4I1 on formalin-fixed paraffin-embedded human salivary gland. [antibody concentration 3 ug/ml]



### Sandwich ELISA (Recombinant protein)

Detection limit for recombinant GST tagged COX4I1 is 1 ng/ml as a capture antibody.



Western Blot detection against Immunogen (44.33 KDa) .

## Specification

<b>Product Description</b>	Mouse monoclonal antibody raised against a full-length recombinant COX4I1.
<b>Immunogen</b>	COX4I1 (AAH08704, 1 a.a. ~ 169 a.a) full-length recombinant protein with GST tag. MW of the GST tag alone is 26 KDa.
<b>Sequence</b>	MLATRVFSLVGKRAISTSVCVRAHESVVKSEDFSLPAYMDRRDHPLPEVAHVKHLASQKALKE KEKASWSSLSMDEKVELYRIKFESFAEMNRGSNEWKTVVGGAMFFIGFTALVIMWQKHVYGP LPQSFDKEWVAKQTKRMLDMKVNPIQGLASKWDYEKNEWKK
<b>Host</b>	Mouse
<b>Reactivity</b>	Human
<b>Isotype</b>	IgG2a Kappa
<b>Quality Control Testing</b>	Antibody Reactive Against Recombinant Protein. Western Blot detection against Immunogen (44.33 KDa) .
<b>Storage Buffer</b>	In 1x PBS, pH 7.4
<b>Storage Instruction</b>	Store at -20°C or lower. Aliquot to avoid repeated freezing and thawing.

## Applications

- Western Blot (Transfected lysate)

Western Blot analysis of COX4I1 expression in transfected 293T cell line by COX4I1 monoclonal antibody (M08), clone 4A10.

Lane 1: COX4I1 transfected lysate(19.6 KDa).

Lane 2: Non-transfected lysate.

[Protocol Download](#)

- Western Blot (Recombinant protein)

[Protocol Download](#)

- Immunohistochemistry (Formalin/PFA-fixed paraffin-embedded sections)

Immunoperoxidase of monoclonal antibody to COX4I1 on formalin-fixed paraffin-embedded human salivary gland. [antibody concentration 3 ug/ml]

[Protocol Download](#)

- Sandwich ELISA (Recombinant protein)

Detection limit for recombinant GST tagged COX4I1 is 1 ng/ml as a capture antibody.

[Protocol Download](#)

- ELISA

## Gene Info — COX4I1

Entrez GeneID [1327](#)

GeneBank Accession# [BC008704](#)

Protein Accession# [AAH08704](#)

Gene Name COX4I1

Gene Alias COX4, COXIV, MGC72016

Gene Description cytochrome c oxidase subunit IV isoform 1

Omim ID [123864](#)

Gene Ontology [Hyperlink](#)

**Gene Summary** Cytochrome c oxidase (COX) is the terminal enzyme of the mitochondrial respiratory chain. It is a multi-subunit enzyme complex that couples the transfer of electrons from cytochrome c to molecular oxygen and contributes to a proton electrochemical gradient across the inner mitochondrial membrane. The complex consists of 13 mitochondrial- and nuclear-encoded subunits. The mitochondrially-encoded subunits perform the electron transfer and proton pumping activities. The functions of the nuclear-encoded subunits are unknown but they may play a role in the regulation and assembly of the complex. This gene encodes the nuclear-encoded subunit IV isoform 1 of the human mitochondrial respiratory chain enzyme. It is located at the 3' of the NOC4 (neighbor of COX4) gene in a head-to-head orientation, and shares a promoter with it. [provided by RefSeq]

**Other Designations** -

## Publication Reference

- [Mitochondrial translocation of estrogen receptor  \$\beta\$  affords resistance to oxidative insult-induced apoptosis and contributes to the pathogenesis of endometriosis.](#)

Liao TL, Lee YC, Tzeng CR, Wang YP, Chang HY, Lin YF, Kao SH.

Free Radical Biology & Medicine 2019 Jan; 134:359.

Application: WB-Ti, Human, Human endometriotic tissues

## Pathway

- [Cardiac muscle contraction](#)
- [Metabolic pathways](#)
- [Oxidative phosphorylation](#)