

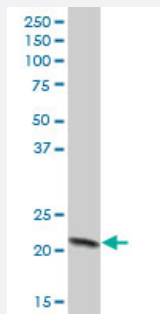
MaxPab®

# COX4I1 purified MaxPab mouse polyclonal antibody (B01P)

Catalog # H00001327-B01P

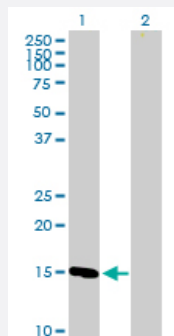
Size 50 ug

## Applications



### Western Blot (Tissue lysate)

COX4I1 MaxPab polyclonal antibody. Western Blot analysis of COX4I1 expression in human kidney.



### Western Blot (Transfected lysate)

Western Blot analysis of COX4I1 expression in transfected 293T cell line ([H00001327-T01](#)) by COX4I1 MaxPab polyclonal antibody.

Lane 1: COX4I1 transfected lysate(18.59 KDa).

Lane 2: Non-transfected lysate.

## Specification

Product Description	Mouse polyclonal antibody raised against a full-length human COX4I1 protein.
Immunogen	COX4I1 (NP_001852.1, 1 a.a. ~ 169 a.a) full-length human protein.
Sequence	MLATRVFSLVGKRAISTSVCVRAHESVVKSEDFSLPAYMDRRDHPLPEVAHVKHLASQKALKE KEKASWSSLSMDEKVELYRIKFESFAEMNRGSNEWKTVVGGAMFFIGFTALVIMWQKHVYGP LPQSFDKEWVAKQTKRMLDMKVNPIQGLASKWDYEKNEWKK
Host	Mouse
Reactivity	Human

Quality Control Testing	Antibody reactive against mammalian transfected lysate.
Storage Buffer	In 1x PBS, pH 7.4
Storage Instruction	Store at -20°C or lower. Aliquot to avoid repeated freezing and thawing.

## Applications

- Western Blot (Tissue lysate)

COX4I1 MaxPab polyclonal antibody. Western Blot analysis of COX4I1 expression in human kidney.

[Protocol Download](#)

- Western Blot (Transfected lysate)

Western Blot analysis of COX4I1 expression in transfected 293T cell line ([H00001327-T01](#)) by COX4I1 MaxPab polyclonal antibody.

Lane 1: COX4I1 transfected lysate(18.59 KDa).

Lane 2: Non-transfected lysate.

[Protocol Download](#)

## Gene Info — COX4I1

Entrez GeneID	<a href="#">1327</a>
GeneBank Accession#	<a href="#">NM_001861.2</a>
Protein Accession#	<a href="#">NP_001852.1</a>
Gene Name	COX4I1
Gene Alias	COX4, COXIV, MGC72016
Gene Description	cytochrome c oxidase subunit IV isoform 1
Omim ID	<a href="#">123864</a>
Gene Ontology	<a href="#">Hyperlink</a>

**Gene Summary**

Cytochrome c oxidase (COX) is the terminal enzyme of the mitochondrial respiratory chain. It is a multi-subunit enzyme complex that couples the transfer of electrons from cytochrome c to molecular oxygen and contributes to a proton electrochemical gradient across the inner mitochondrial membrane. The complex consists of 13 mitochondrial- and nuclear-encoded subunits. The mitochondrially-encoded subunits perform the electron transfer and proton pumping activities. The functions of the nuclear-encoded subunits are unknown but they may play a role in the regulation and assembly of the complex. This gene encodes the nuclear-encoded subunit IV isoform 1 of the human mitochondrial respiratory chain enzyme. It is located at the 3' of the NOC4 (neighbor of COX4) gene in a head-to-head orientation, and shares a promoter with it. [provided by RefSeq]

**Other Designations**

-

**Pathway**

- [Cardiac muscle contraction](#)
- [Metabolic pathways](#)
- [Oxidative phosphorylation](#)