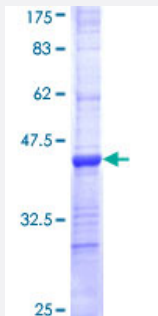


COL19A1 (Human) Recombinant Protein (Q01)

Catalog # H00001310-Q01

Size 25 ug, 10 ug

Applications



Specification

| | |
|--------------------------------------|--|
| Product Description | Human COL19A1 partial ORF (NP_001849, 27 a.a. - 114 a.a.) recombinant protein with GST-tag at N-terminal. |
| Sequence | RDKTEESCPILRIEGHQLTYDNINKLEVSGFDLGDSFSLRRAFCESDKTCFKLGSALLIRDITKIFPK GLPEEYSVAAMFRVRRNAKK |
| Host | Wheat Germ (in vitro) |
| Theoretical MW (kDa) | 35.42 |
| Interspecies Antigen Sequence | Mouse (72) |
| Preparation Method | in vitro wheat germ expression system |
| Purification | Glutathione Sepharose 4 Fast Flow |
| Quality Control Testing | 12.5% SDS-PAGE Stained with Coomassie Blue. |
| Storage Buffer | 50 mM Tris-HCl, 10 mM reduced Glutathione, pH=8.0 in the elution buffer. |
| Storage Instruction | Store at -80°C. Aliquot to avoid repeated freezing and thawing. |
| Note | Best use within three months from the date of receipt of this protein. |

Applications

- Enzyme-linked Immunoabsorbent Assay
- Western Blot (Recombinant protein)
- Antibody Production
- Protein Array

Gene Info — COL19A1

Entrez GeneID [1310](#)

GeneBank Accession# [NM_001858](#)

Protein Accession# [NP_001849](#)

Gene Name COL19A1

Gene Alias COL9A1L, D6S228E

Gene Description collagen, type XIX, alpha 1

Omim ID [120165](#)

Gene Ontology [Hyperlink](#)

Gene Summary This gene encodes the alpha chain of type XIX collagen, a member of the FACIT collagen family (fibril-associated collagens with interrupted helices). Although the function of this collagen is not known, other members of this collagen family are found in association with fibril-forming collagens such as type I and II, and serve to maintain the integrity of the extracellular matrix. The transcript produced from this gene has an unusually large 3' UTR which has not been completely sequenced. [provided by RefSeq]

Other Designations OTTHUMP00000016695|OTTHUMP00000039279|a1 chain of type XIX collagen|alpha 1 type XIX collagen|collagen XIX, alpha-1 polypeptide|collagen alpha 1 (Y) chain

Disease

- [Tobacco Use Disorder](#)