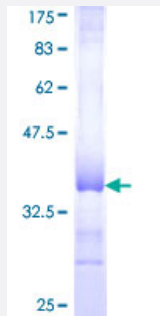


COL16A1 (Human) Recombinant Protein (Q01)

Catalog # H00001307-Q01

Size 25 ug, 10 ug

Applications



Specification

Product Description	Human COL16A1 partial ORF (NP_001847, 117 a.a. - 216 a.a.) recombinant protein with GST-tag at N-terminal.
Sequence	WYLFQVTDANGYPQISLEVNSQERSLELRAQQDGDGFVSCIFPVPQLFDLRWHKLMMLSVAGRVA SVHVCSSASSQPLGPRRPMRPVGHVFLGLDAEQGK
Host	Wheat Germ (in vitro)
Theoretical MW (kDa)	36.74
Interspecies Antigen Sequence	Mouse (95)
Preparation Method	in vitro wheat germ expression system
Purification	Glutathione Sepharose 4 Fast Flow
Quality Control Testing	12.5% SDS-PAGE Stained with Coomassie Blue.
Storage Buffer	50 mM Tris-HCl, 10 mM reduced Glutathione, pH=8.0 in the elution buffer.
Storage Instruction	Store at -80°C. Aliquot to avoid repeated freezing and thawing.
Note	Best use within three months from the date of receipt of this protein.

Applications

- Enzyme-linked Immunoabsorbent Assay
- Western Blot (Recombinant protein)
- Antibody Production
- Protein Array

Gene Info — COL16A1

Entrez GeneID [1307](#)

GeneBank Accession# [NM_001856](#)

Protein Accession# [NP_001847](#)

Gene Name COL16A1

Gene Alias 447AA, FP1572

Gene Description collagen, type XVI, alpha 1

Omim ID [120326](#)

Gene Ontology [Hyperlink](#)

Gene Summary This gene encodes the alpha chain of type XVI collagen, a member of the FACIT collagen family (fibril-associated collagens with interrupted helices). Members of this collagen family are found in association with fibril-forming collagens such as type I and II, and serve to maintain the integrity of the extracellular matrix. High levels of type XVI collagen have been found in fibroblasts and keratinocytes, and in smooth muscle and amnion. [provided by RefSeq]

Other Designations OTTHUMP00000003955|alpha 1 type XVI collagen|collagen XVI, alpha-1 polypeptide

Disease

- [Cardiovascular Diseases](#)
- [Diabetes Mellitus](#)
- [Edema](#)