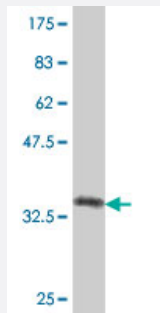


COL16A1 polyclonal antibody (A01)

Catalog # H00001307-A01

Size 50 uL

Applications



Western Blot detection against Immunogen (37.11 kDa) .

Specification

Product Description	Mouse polyclonal antibody raised against a partial recombinant COL16A1.
Immunogen	COL16A1 (NP_001847, 117 a.a. ~ 216 a.a) partial recombinant protein with GST tag.
Sequence	WYLFQVTDANGYPQISLEVNSQERSLELRAQGQDGDVSCIFVPQLFDLRWHKMLSVAGRVA SVHVD CSSASSQPLGPRRPMRPVGHVFLGLDAEQGK
Host	Mouse
Reactivity	Human
Interspecies Antigen Sequence	Mouse (95)
Quality Control Testing	Antibody Reactive Against Recombinant Protein. Western Blot detection against Immunogen (37.11 kDa) .
Storage Buffer	50 % glycerol
Storage Instruction	Store at -20°C or lower. Aliquot to avoid repeated freezing and thawing.

Applications

- Western Blot (Recombinant protein)

[Protocol Download](#)

- ELISA

Gene Info — COL16A1

Entrez GeneID [1307](#)

GeneBank Accession# [NM_001856](#)

Protein Accession# [NP_001847](#)

Gene Name COL16A1

Gene Alias 447AA, FP1572

Gene Description collagen, type XVI, alpha 1

Omim ID [120326](#)

Gene Ontology [Hyperlink](#)

Gene Summary This gene encodes the alpha chain of type XVI collagen, a member of the FACIT collagen family (fibril-associated collagens with interrupted helices). Members of this collagen family are found in association with fibril-forming collagens such as type I and II, and serve to maintain the integrity of the extracellular matrix. High levels of type XVI collagen have been found in fibroblasts and keratinocytes, and in smooth muscle and amnion. [provided by RefSeq]

Other Designations OTTHUMP00000003955|alpha 1 type XVI collagen|collagen XVI, alpha-1 polypeptide

Disease

- [Cardiovascular Diseases](#)
- [Diabetes Mellitus](#)
- [Edema](#)