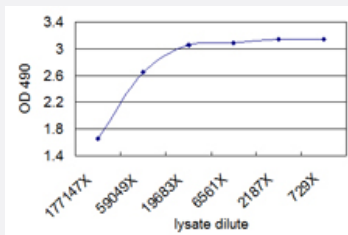


CNN1 (Human) Matched Antibody Pair

Catalog # H00001264-AP41

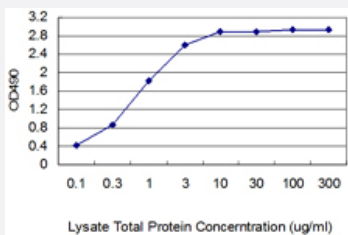
Size 1 Set

Applications



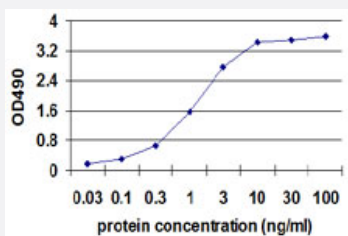
ELISA Pair (Transfected lysate)

Sandwich ELISA detection sensitivity ranging from approximately 177147x to 2187x dilution of the CNN1 293T overexpression lysate (non-denatured). Standard curve using CNN1 293T overexpression lysate (non-denatured) as an analyte.



ELISA Pair (Tissue lysate)

Standard curve using human uterus myoma tissue lysate as an analyte (non-denatured). Sandwich ELISA detection sensitivity ranging from 100 ng/ml to 10 ug/ml for lysate total protein.



Sandwich ELISA detection sensitivity ranging from 0.03 ng/ml to 100 ng/ml.

Specification

Product Description

This antibody pair set comes with a matched antibody pair to detect and quantify the protein level of human CNN1.

Reactivity	Human
Quality Control Testing	Standard curve using recombinant protein (H00001264-P01) as an analyte. Sandwich ELISA detection sensitivity ranging from 0.03 ng/ml to 100 ng/ml.
Supplied Product	Antibody pair set content: 1. Capture antibody: mouse monoclonal anti-CNN1, IgG1 Kappa (100 ug) 2. Detection antibody: biotinylated mouse monoclonal anti-CNN1, IgM Kappa (50 ug) *Reagents are sufficient for at least 3-5 x 96 well plates using recommended protocols.
Storage Instruction	Store reagents of the antibody pair set at -20°C or lower. Please aliquot to avoid repeated freeze thaw cycle. Reagents should be returned to -20°C storage immediately after use.

Applications

- ELISA Pair (Recombinant protein)

[Protocol Download](#)

- ELISA Pair (Transfected lysate)

Sandwich ELISA detection sensitivity ranging from approximately 177147x to 2187x dilution of the CNN1 293T overexpression lysate (non-denatured). Standard curve using CNN1 293T overexpression lysate (non-denatured) as an analyte.

[Protocol Download](#)

- ELISA Pair (Tissue lysate)

Standard curve using human uterus myoma tissue lysate as an analyte (non-denatured). Sandwich ELISA detection sensitivity ranging from 100 ng/ml to 10 ug/ml for lysate total protein.

[Protocol Download](#)

Gene Info — CNN1

Entrez GeneID	1264
Gene Name	CNN1
Gene Alias	SMCC, Sm-Calp
Gene Description	calponin 1, basic, smooth muscle
Omim ID	600806
Gene Ontology	Hyperlink

Gene Summary

basic

Other Designations

calponins, basic

Publication Reference

- [Extracellular vesicle analysis of plasma allows differential diagnosis of atypical pancreatic serous cystadenoma.](#)

Katherine S Yang, Aileen O'Shea, Piotr Zelga, Andrew S Liss, Carlos Fernandez Del Castillo, Ralph Weissleder

Scientific Reports 2023 Jul; 13(1):10969.

Application: MBA, Human, Human plasma

Disease

- [Cardiovascular Diseases](#)
- [Diabetes Mellitus](#)
- [Edema](#)