

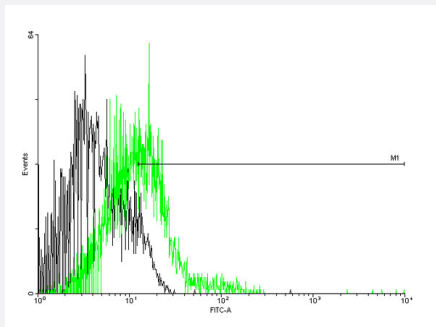
MaxPab®

# CCBP2 purified MaxPab mouse polyclonal antibody (B02P)

Catalog # H00001238-B02P

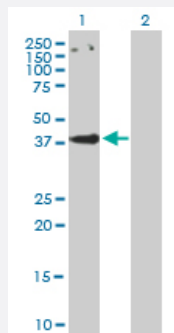
Size 50 ug

## Applications



### Flow Cytometry

FACS analysis of negative control 293 cells (Black) and CCBP2 expressing 293 cells (Green) using CCBP2 purified MaxPab mouse polyclonal antibody.



### Western Blot (Transfected lysate)

Western Blot analysis of CCBP2 expression in transfected 293T cell line ([H00001238-T03](#)) by CCBP2 MaxPab polyclonal antibody.

Lane 1: CCBP2 transfected lysate(42.24 KDa).

Lane 2: Non-transfected lysate.

## Specification

### Product Description

Mouse polyclonal antibody raised against a full-length human CCBP2 protein.

### Immunogen

CCBP2 (NP\_001287.2, 1 a.a. ~ 384 a.a) full-length human protein.

### Sequence

MAATASPQPLATEDADSENSSFYYDYLDDEVAFMLCRKDAVVSGKVFLPVFYSLIFVLGLSGNL  
LLLMVLLRYVPRRRMVEMLNLAINLLFLVTLFPWGISVAWHWVFGSFLCKMVSTLYTINFYSGIFF  
ISCMSLDKYLEIVHAQPYHRLRTRAKSLLLATVWAVSLAVSIPDMVFVQTHENPKGWWNCHADFG  
GHGTWKLFLRFQQNLLGFLLPLLAMIFFYSRIGCVLVRLRPAGQGRALKIAAALVVAFFVLWFPYN  
LTLFLHTLLDLQVFGNCEVSQHLDYALQVTESIAFLHCCFSPILYAFSSHRFRQYLKAFLLAVLGWH  
LAPGTAQASLSSCSESSILTAQEEMTGMNDLGERQSENYPNKEDVGNKSA

### Host

Mouse

Reactivity	Human
Interspecies Antigen Sequence	Mouse (72); Rat (72)
Quality Control Testing	Antibody reactive against mammalian transfected lysate.
Storage Buffer	In 1x PBS, pH 7.4
Storage Instruction	Store at -20°C or lower. Aliquot to avoid repeated freezing and thawing.

## Applications

- Flow Cytometry

FACS analysis of negative control 293 cells (Black) and CCBP2 expressing 293 cells (Green) using CCBP2 purified MaxPab mouse polyclonal antibody.

- Western Blot (Transfected lysate)

Western Blot analysis of CCBP2 expression in transfected 293T cell line ([H00001238-T03](#)) by CCBP2 MaxPab polyclonal antibody.

Lane 1: CCBP2 transfected lysate(42.24 KDa).

Lane 2: Non-transfected lysate.

[Protocol Download](#)

## Gene Info — CCBP2

Entrez GeneID	<a href="#">1238</a>
GeneBank Accession#	<a href="#">NM_001296</a>
Protein Accession#	<a href="#">NP_001287.2</a>
Gene Name	CCBP2
Gene Alias	CCR10, CCR9, CMKBR9, D6, MGC126678, MGC138250, hD6
Gene Description	chemokine binding protein 2
Omim ID	<a href="#">602648</a>
Gene Ontology	<a href="#">Hyperlink</a>

**Gene Summary**

This gene encodes a beta chemokine receptor, which is predicted to be a seven transmembrane protein similar to G protein-coupled receptors. Chemokines and their receptor-mediated signal transduction are critical for the recruitment of effector immune cells to the inflammation site. This gene is expressed in a range of tissues and hemopoietic cells. The expression of this receptor in lymphatic endothelial cells and overexpression in vascular tumors suggested its function in chemokine-driven recirculation of leukocytes and possible chemokine effects on the development and growth of vascular tumors. This receptor appears to bind the majority of beta-chemokine family members; however, its specific function remains unknown. This gene is mapped to chromosome 3p21.3, a region that includes a cluster of chemokine receptor genes. [provided by RefSeq]

**Other Designations**

CC-chemokine-binding receptor JAB61|chemokine (C-C motif) receptor 9|chemokine (C-C) receptor 9|chemokine receptor D6

**Disease**

- [Genetic Predisposition to Disease](#)
- [Hepatitis C](#)
- [Kidney Failure](#)
- [Liver Cirrhosis](#)