

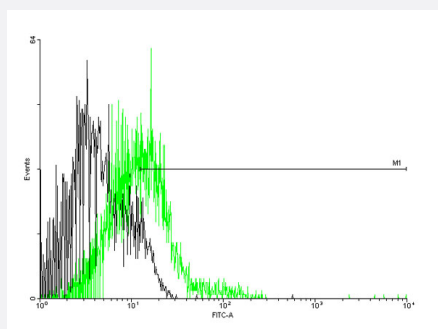
MaxPab®

CCBP2 MaxPab mouse polyclonal antibody (B02)

Catalog # H00001238-B02

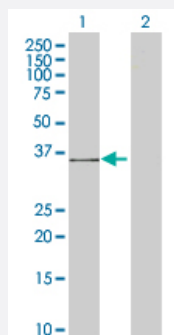
Size 50 uL

Applications



Flow Cytometry

FACS analysis of negative control 293 cells (Black) and CCBP2 expressing 293 cells (Green) using CCBP2 purified MaxPab mouse polyclonal antibody.



Western Blot (Transfected lysate)

Western Blot analysis of CCBP2 expression in transfected 293T cell line ([H00001238-T02](#)) by CCBP2 MaxPab polyclonal antibody.

Lane 1: CCBP2 transfected lysate(42.24 KDa).

Lane 2: Non-transfected lysate.

Specification

Product Description

Mouse polyclonal antibody raised against a full-length human CCBP2 protein.

Immunogen

CCBP2 (NP_001287, 1 a.a. ~ 384 a.a) full-length human protein.

Sequence

MAATASPQPLATEDADSENSSFYYDYLDDEVAFMLCRKDAVVSGKVFLPVFYSLIFVLGLSGNL
LLLMVLLRYVPRRRMVEMLNLAINLLFLVTLPLFWGISVAWHWVFGSFLCKMVSTLYTINFYSGIFF
ISCMSLDKYLEIVHAQPYHRLRTRAKSLLLATVWAVSLAVSIPDMVFVQTHENPKG VWNCHADFG
GHGTWKLFLRFQQNLLGFLLPLLAMIFFYSRIGCVLVRLRPAGQGGRALKIAAALVVAFFVLWFPYN
LTLFLHTLLDLQVFGNCEVSQHLDYALQVTESIAFLHCCFSPILYAFSSHRFRQYLKAFLAAVLGWH
LAPGTAQASLSSCSESSILTAQEEMTGMNDLGERQSENYPNKEDVGNKSA

Host

Mouse

Reactivity	Human
Interspecies Antigen Sequence	Mouse (72); Rat (72)
Quality Control Testing	Antibody reactive against mammalian transfected lysate.
Storage Buffer	No additive
Storage Instruction	Store at -20°C or lower. Aliquot to avoid repeated freezing and thawing.
Note	For IHC and IF applications, antibody purification with Protein A will be needed prior to use.

Applications

- Flow Cytometry

FACS analysis of negative control 293 cells (Black) and CCBP2 expressing 293 cells (Green) using CCBP2 purified MaxPab mouse polyclonal antibody.

- Western Blot (Transfected lysate)

Western Blot analysis of CCBP2 expression in transfected 293T cell line ([H00001238-T02](#)) by CCBP2 MaxPab polyclonal antibody.

Lane 1: CCBP2 transfected lysate(42.24 KDa).

Lane 2: Non-transfected lysate.

[Protocol Download](#)

Gene Info — CCBP2

Entrez GeneID	1238
GeneBank Accession#	NM_001296
Protein Accession#	NP_001287
Gene Name	CCBP2
Gene Alias	CCR10, CCR9, CMKBR9, D6, MGC126678, MGC138250, hD6
Gene Description	chemokine binding protein 2
Omim ID	602648
Gene Ontology	Hyperlink

Gene Summary

This gene encodes a beta chemokine receptor, which is predicted to be a seven transmembrane protein similar to G protein-coupled receptors. Chemokines and their receptor-mediated signal transduction are critical for the recruitment of effector immune cells to the inflammation site. This gene is expressed in a range of tissues and hemopoietic cells. The expression of this receptor in lymphatic endothelial cells and overexpression in vascular tumors suggested its function in chemokine-driven recirculation of leukocytes and possible chemokine effects on the development and growth of vascular tumors. This receptor appears to bind the majority of beta-chemokine family members; however, its specific function remains unknown. This gene is mapped to chromosome 3p21.3, a region that includes a cluster of chemokine receptor genes. [provided by RefSeq]

Other Designations

CC-chemokine-binding receptor JAB61|chemokine (C-C motif) receptor 9|chemokine (C-C) receptor 9|chemokine receptor D6

Publication Reference

- [Atypical Chemokine Receptor ACKR2-V41A Has Decreased CCL2 Binding, Scavenging, and Activation, Supporting Sustained Inflammation and Increased Alzheimer's Disease Risk.](#)

Josue D Gonzalez Murcia, Allen Weinert, Claudia M Tellez Freitas, Daniel K Arens, Meganne N Ferrel, Julianne H Grose, Perry G Ridge, Eric Wilson, John S K Kauwe, K Scott Weber.

Scientific Reports 2020 May; 10(1):8019.

Application: Flow Cyt, Mouse, CHO-k1 cells

Disease

- [Genetic Predisposition to Disease](#)
- [Hepatitis C](#)
- [Kidney Failure](#)
- [Liver Cirrhosis](#)