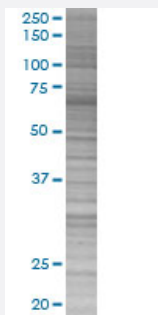


CLPS 293T Cell Transient Overexpression Lysate(Denatured)

Catalog # H00001208-T01

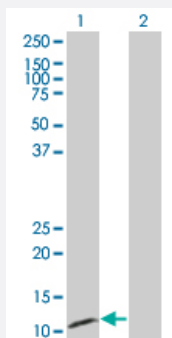
Size 100 uL

Applications



SDS-PAGE Gel

CLPS transfected lysate.



Western Blot

Lane 1: CLPS transfected lysate (12.43 KDa)

Lane 2: Non-transfected lysate.

Specification

Transfected Cell Line 293T

Plasmid pCMV-CLPS full-length

Host Human

Theoretical MW (kDa) 12.43

Quality Control Testing Transient overexpression cell lysate was tested with Anti-CLPS antibody ([H00001208-B01](#)) by Western Blots.
 SDS-PAGE Gel
 CLPS transfected lysate.
 Western Blot
 Lane 1: CLPS transfected lysate (12.43 KDa)
 Lane 2: Non-transfected lysate.

Storage Buffer	1X Sample Buffer (50 mM Tris-HCl, 2% SDS, 10% glycerol, 300 mM 2-mercaptoethanol, 0.01% Bromophenol blue)
Storage Instruction	Store at -80°C. Aliquot to avoid repeated freezing and thawing.

Applications

- Western Blot

Gene Info — CLPS

Entrez GeneID	1208
GeneBank Accession#	NM_001832.2
Protein Accession#	-
Gene Name	CLPS
Gene Alias	-
Gene Description	colipase, pancreatic
Omim ID	120105
Gene Ontology	Hyperlink
Gene Summary	The protein encoded by this gene is a cofactor needed by pancreatic lipase for efficient dietary lipid hydrolysis. It binds to the C-terminal, non-catalytic domain of lipase, thereby stabilizing an active conformation and considerably increasing the overall hydrophobic binding site. The gene product allows lipase to anchor noncovalently to the surface of lipid micelles, counteracting the destabilizing influence of intestinal bile salts. This cofactor is only expressed in pancreatic acinar cells, suggesting regulation of expression by tissue-specific elements. [provided by RefSeq]
Other Designations	OTTHUMP00000016271 colipase pancreatic colipase preproprotein

Disease

- [Diabetes Mellitus](#)
- [Genetic Predisposition to Disease](#)
- [Obesity](#)