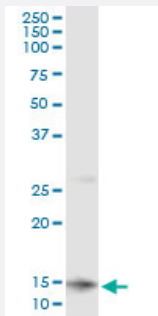


CLPS monoclonal antibody (M01), clone 8A8

Catalog # H00001208-M01

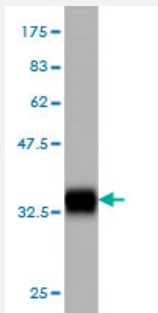
Size 100 ug

Applications



Immunoprecipitation

Immunoprecipitation of CLPS transfected lysate using anti-CLPS monoclonal antibody and Protein A Magnetic Bead, and immunoblotted with CLPS MaxPab rabbit polyclonal antibody.



Western Blot detection against Immunogen (35.64 KDa) .

Specification

Product Description	Mouse monoclonal antibody raised against a partial recombinant CLPS.
Immunogen	CLPS (NP_001823, 23 a.a. ~ 112 a.a) partial recombinant protein with GST tag. MW of the GST tag alone is 26 KDa.
Sequence	GIINLENGELCMNSAQCKSNCCQHSSALGLARCTSMASENSECSVKTLYGIIYKPCERGLTCEG DKTIVGSITNTNFGICHDAGRSKQ
Host	Mouse
Reactivity	Human
Isotype	IgG2a Kappa

Quality Control Testing

Antibody Reactive Against Recombinant Protein.
Western Blot detection against Immunogen (35.64 KDa) .

Storage Buffer

In 1x PBS, pH 7.4

Storage Instruction

Store at -20°C or lower. Aliquot to avoid repeated freezing and thawing.

Applications

- Western Blot (Recombinant protein)

[Protocol Download](#)

- Immunoprecipitation

Immunoprecipitation of CLPS transfected lysate using anti-CLPS monoclonal antibody and Protein A Magnetic Bead, and immunoblotted with CLPS MaxPab rabbit polyclonal antibody.

[Protocol Download](#)

- ELISA

Gene Info — CLPS

Entrez GeneID

[1208](#)

GeneBank Accession#

[NM_001832](#)

Protein Accession#

[NP_001823](#)

Gene Name

CLPS

Gene Alias

-

Gene Description

colipase, pancreatic

Omim ID

[120105](#)

Gene Ontology

[Hyperlink](#)

Gene Summary

The protein encoded by this gene is a cofactor needed by pancreatic lipase for efficient dietary lipid hydrolysis. It binds to the C-terminal, non-catalytic domain of lipase, thereby stabilizing an active conformation and considerably increasing the overall hydrophobic binding site. The gene product allows lipase to anchor noncovalently to the surface of lipid micelles, counteracting the destabilizing influence of intestinal bile salts. This cofactor is only expressed in pancreatic acinar cells, suggesting regulation of expression by tissue-specific elements. [provided by RefSeq]

Other Designations

OTTHUMP00000016271|colipase|pancreatic colipase preproprotein

Disease

- [Diabetes Mellitus](#)
- [Genetic Predisposition to Disease](#)
- [Obesity](#)