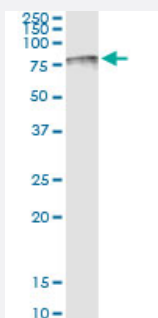


TPP1 (Human) IP-WB Antibody Pair

Catalog # H00001200-PW1

Size 1 Set

Applications



Immunoprecipitation of TPP1 transfected lysate using rabbit polyclonal anti-TPP1 and Protein A Magnetic Bead ([U0007](#)), and immunoblotted with mouse purified polyclonal anti-TPP1.

Specification

Product Description	This IP-WB antibody pair set comes with one antibody for immunoprecipitation and another to detect the precipitated protein in western blot.
Reactivity	Human
Interspecies Antigen Sequence	Mouse (88%); Rat (87%)
Quality Control Testing	Immunoprecipitation-Western Blot (IP-WB) Immunoprecipitation of TPP1 transfected lysate using rabbit polyclonal anti-TPP1 and Protein A Magnetic Bead (U0007), and immunoblotted with mouse purified polyclonal anti-TPP1.
Supplied Product	Antibody pair set content: 1. Antibody pair for IP: rabbit polyclonal anti-TPP1 (300 ul) 2. Antibody pair for WB: mouse purified polyclonal anti-TPP1 (50 ug)
Storage Instruction	Store reagents of the antibody pair set at -20°C or lower. Please aliquot to avoid repeated freeze thaw cycle. Reagents should be returned to -20°C storage immediately after use.

Applications

- Immunoprecipitation-Western Blot

[Protocol Download](#)

Gene Info — TPP1

Entrez GeneID	1200
Gene Name	TPP1
Gene Alias	CLN2, GIG1, LPIC, MGC21297
Gene Description	tripeptidyl peptidase I
Omim ID	204500 607998
Gene Ontology	Hyperlink
Gene Summary	This gene encodes a member of the sedolisin family of serine proteases. The protease functions in the lysosome to cleave N-terminal tripeptides from substrates, and has weaker endopeptidase activity. It is synthesized as a catalytically-inactive enzyme which is activated and auto-proteolyzed upon acidification. Mutations in this gene result in late-infantile neuronal ceroid lipofuscinosis, which is associated with the failure to degrade specific neuropeptides and a subunit of ATP synthase in the lysosome. [provided by RefSeq]
Other Designations	ceroid-lipofuscinosis, neuronal 2, late infantile (Jansky-Bielschowsky disease) growth-inhibiting protein 1 lysosomal pepstatin insensitive protease tripeptidyl aminopeptidase tripeptidyl-peptidase I

Pathway

- [Lysosome](#)

Disease

- [Kidney Failure](#)
- [Neuronal Ceroid-Lipofuscinoses](#)