

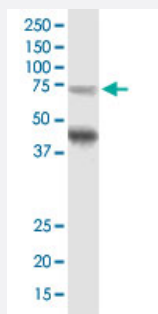
CX Grade

# TPP1 monoclonal antibody (M01J), clone 3B1

Catalog # H00001200-M01J

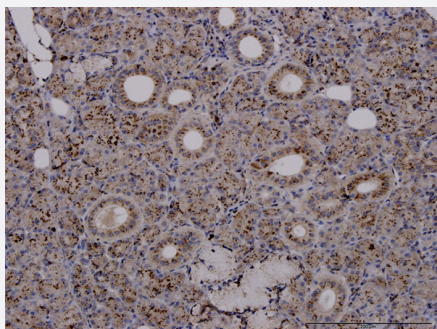
Size 100 ug

## Applications



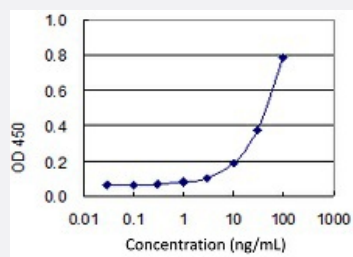
### Western Blot (Cell lysate)

TPP1 monoclonal antibody (M01J), clone 3B1. Western Blot analysis of TPP1 expression in A-431.



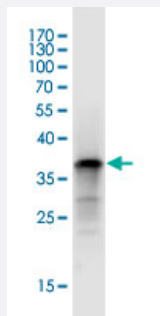
### Immunohistochemistry (Formalin/PFA-fixed paraffin-embedded sections)

Immunoperoxidase of monoclonal antibody to TPP1 on formalin-fixed paraffin-embedded human salivary gland. [antibody concentration 3 ug/ml]



### Sandwich ELISA (Recombinant protein)

Detection limit for recombinant GST tagged TPP1 is 1 ng/ml as a capture antibody.



Western Blot detection against Immunogen (37.73 KDa) .

## Specification

<b>Product Description</b>	Mouse monoclonal antibody raised against a partial recombinant TPP1. This product is belong to Cell Culture Grade Antibody (CX Grade).
<b>Immunogen</b>	TPP1 (AAH14863.1, 195 a.a. ~ 304 a.a) partial recombinant protein with GST tag. MW of the GST tag alone is 26 KDa.
<b>Sequence</b>	GLHLGVTPSVIRKRYNLTSQDVGSGTSNNSQACAQFLEQYFHDSDLAQFMRLFGGNFAHQASVARRVVGQQGRGRAGIEASLDVQYLMSAGANISTWVYSSPGRHEGQEPF
<b>Host</b>	Mouse
<b>Reactivity</b>	Human
<b>Interspecies Antigen Sequence</b>	Mouse (87)
<b>Preparation Method</b>	Cell Culture Production
<b>Isotype</b>	IgG1 Kappa
<b>Quality Control Testing</b>	Antibody Reactive Against Recombinant Protein. Western Blot detection against Immunogen (37.73 KDa) .
<b>Storage Buffer</b>	In 1x PBS, pH 7.4
<b>Storage Instruction</b>	Store at -20°C or lower. Aliquot to avoid repeated freezing and thawing.

## Applications

- Western Blot (Cell lysate)

TPP1 monoclonal antibody (M01J), clone 3B1. Western Blot analysis of TPP1 expression in A-431.

[Protocol Download](#)

- Western Blot (Recombinant protein)

[Protocol Download](#)

- Immunohistochemistry (Formalin/PFA-fixed paraffin-embedded sections)

Immunoperoxidase of monoclonal antibody to TPP1 on formalin-fixed paraffin-embedded human salivary gland. [antibody concentration 3 ug/ml]

[Protocol Download](#)

- Sandwich ELISA (Recombinant protein)

Detection limit for recombinant GST tagged TPP1 is 1 ng/ml as a capture antibody.

[Protocol Download](#)

- ELISA

## Gene Info — TPP1

Entrez GeneID [1200](#)

GeneBank Accession# [BC014863.1](#)

Protein Accession# [AAH14863.1](#)

Gene Name TPP1

Gene Alias CLN2, GIG1, LPIC, MGC21297

Gene Description tripeptidyl peptidase I

Omim ID [204500 607998](#)

Gene Ontology [Hyperlink](#)

**Gene Summary** This gene encodes a member of the sedolisin family of serine proteases. The protease functions in the lysosome to cleave N-terminal tripeptides from substrates, and has weaker endopeptidase activity. It is synthesized as a catalytically-inactive enzyme which is activated and auto-proteolyzed upon acidification. Mutations in this gene result in late-infantile neuronal ceroid lipofuscinosis, which is associated with the failure to degrade specific neuropeptides and a subunit of ATP synthase in the lysosome. [provided by RefSeq]

**Other Designations** ceroid-lipofuscinosis, neuronal 2, late infantile (Jansky-Bielschowsky disease)|growth-inhibiting protein 1|lysosomal pepstatin insensitive protease|tripeptidyl aminopeptidase|tripeptidyl-peptidase I

## Pathway

- [Lysosome](#)

## Disease

- [Kidney Failure](#)
- [Neuronal Ceroid-Lipofuscinoses](#)