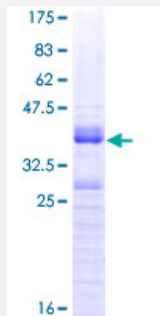


# CLK3 (Human) Recombinant Protein (Q01)

Catalog # H00001198-Q01

Size 25 ug, 10 ug

## Applications



## Specification

<b>Product Description</b>	Human CLK3 partial ORF ( AAH02555, 36 a.a. - 136 a.a.) recombinant protein with GST-tag at N-terminal.
<b>Sequence</b>	YPSRREPPPPRRSRSRSHDLRPYQRRYRERRDSDTYRCEERSPSFGEDYYGPSRSRHRRRSRER GPYRTRKHAHHCHKRRTRSCSSASSRSQQSSKRSSRSV
<b>Host</b>	Wheat Germ (in vitro)
<b>Theoretical MW (kDa)</b>	36.74
<b>Preparation Method</b>	<a href="#">in vitro wheat germ expression system</a>
<b>Purification</b>	Glutathione Sepharose 4 Fast Flow
<b>Quality Control Testing</b>	12.5% SDS-PAGE Stained with Coomassie Blue.
<b>Storage Buffer</b>	50 mM Tris-HCl, 10 mM reduced Glutathione, pH=8.0 in the elution buffer.
<b>Storage Instruction</b>	Store at -80°C. Aliquot to avoid repeated freezing and thawing.
<b>Note</b>	Best use within three months from the date of receipt of this protein.

## Applications

- Enzyme-linked Immunoabsorbent Assay
- Western Blot (Recombinant protein)
- Antibody Production
- Protein Array

## Gene Info — CLK3

**Entrez GeneID** [1198](#)

**GeneBank Accession#** [BC002555](#)

**Protein Accession#** [AAH02555](#)

**Gene Name** CLK3

**Gene Alias** FLJ22858, PHCLK3, PHCLK3/152

**Gene Description** CDC-like kinase 3

**Omim ID** [602990](#)

**Gene Ontology** [Hyperlink](#)

**Gene Summary** This gene encodes a protein belonging to the serine/threonine type protein kinase family. This protein is a nuclear dual-specificity kinase that regulates the intranuclear distribution of the serine/arginine-rich (SR) family of splicing factors. Two transcript variants encoding different isoforms have been found for this gene. Related pseudogenes are located on chromosomes 1 and 9. [provided by RefSeq]

**Other Designations** dual specificity protein kinase CLK3