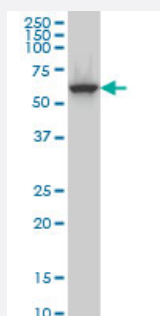


# CLK3 monoclonal antibody (M07), clone 7D6

Catalog # H00001198-M07

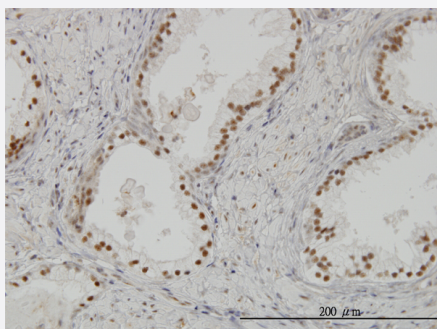
Size 100 ug

## Applications



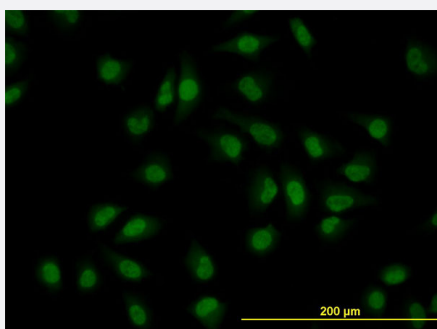
### Western Blot (Cell lysate)

CLK3 monoclonal antibody (M07), clone 7D6 Western Blot analysis of CLK3 expression in MCF-7 ( Cat # L046V1 ).



### Immunohistochemistry (Formalin/PFA-fixed paraffin-embedded sections)

Immunoperoxidase of monoclonal antibody to CLK3 on formalin-fixed paraffin-embedded human prostate. [antibody concentration 3 ug/ml]



### Immunofluorescence

Immunofluorescence of monoclonal antibody to CLK3 on HeLa cell. [antibody concentration 10 ug/ml]



Western Blot detection against Immunogen (36.74 KDa) .

## Specification

<b>Product Description</b>	Mouse monoclonal antibody raised against a partial recombinant CLK3.
<b>Immunogen</b>	CLK3 (AAH02555, 36 a.a. ~ 136 a.a) partial recombinant protein with GST tag. MW of the GST tag alone is 26 KDa.
<b>Sequence</b>	YPSRREPPPPRRSRSRSHDLRPYQRRYRERRDSDTYRCEERSPSFGEDYYGPSRSRHRRRSRER GPYRTRKHAHHCHKRRTRSCSSASSRSQQSSKRSSRSV
<b>Host</b>	Mouse
<b>Reactivity</b>	Human
<b>Isotype</b>	IgG2b Kappa
<b>Quality Control Testing</b>	Antibody Reactive Against Recombinant Protein. Western Blot detection against Immunogen (36.74 KDa) .
<b>Storage Buffer</b>	In 1x PBS, pH 7.4
<b>Storage Instruction</b>	Store at -20°C or lower. Aliquot to avoid repeated freezing and thawing.

## Applications

- Western Blot (Cell lysate)

CLK3 monoclonal antibody (M07), clone 7D6 Western Blot analysis of CLK3 expression in MCF-7 ( Cat # L046V1 ).

[Protocol Download](#)

- Western Blot (Recombinant protein)

[Protocol Download](#)

- Immunohistochemistry (Formalin/PFA-fixed paraffin-embedded sections)

Immunoperoxidase of monoclonal antibody to CLK3 on formalin-fixed paraffin-embedded human prostate. [antibody concentration 3 ug/ml]

[Protocol Download](#)

- ELISA

- Immunofluorescence

Immunofluorescence of monoclonal antibody to CLK3 on HeLa cell. [antibody concentration 10 ug/ml]

## Gene Info — CLK3

Entrez GeneID [1198](#)

GeneBank Accession# [BC002555](#)

Protein Accession# [AAH02555](#)

Gene Name CLK3

Gene Alias FLJ22858, PHCLK3, PHCLK3/152

Gene Description CDC-like kinase 3

Omim ID [602990](#)

Gene Ontology [Hyperlink](#)

**Gene Summary** This gene encodes a protein belonging to the serine/threonine type protein kinase family. This protein is a nuclear dual-specificity kinase that regulates the intranuclear distribution of the serine/arginine-rich (SR) family of splicing factors. Two transcript variants encoding different isoforms have been found for this gene. Related pseudogenes are located on chromosomes 1 and 9. [provided by RefSeq]

**Other Designations** dual specificity protein kinase CLK3