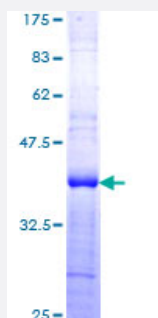


CLK1 (Human) Recombinant Protein (Q01)

Catalog # H00001195-Q01

Size 25 ug, 10 ug

Applications



Specification

Product Description	Human CLK1 partial ORF (AAH31549, 1 a.a. - 100 a.a.) recombinant protein with GST-tag at N-terminal.
Sequence	MRHSKRTYCPDWDDKDWDYGKWRSSSSHKRRKRSHSSAQENKRCKYNHSKMCDSHYLESRSI NEKDYHSRRYIDEYRNDYTQGCEPGHRQRDHESRYQNH
Host	Wheat Germ (in vitro)
Theoretical MW (kDa)	36.63
Interspecies Antigen Sequence	Mouse (77); Rat (77)
Preparation Method	in vitro wheat germ expression system
Purification	Glutathione Sepharose 4 Fast Flow
Quality Control Testing	12.5% SDS-PAGE Stained with Coomassie Blue.
Storage Buffer	50 mM Tris-HCl, 10 mM reduced Glutathione, pH=8.0 in the elution buffer.
Storage Instruction	Store at -80°C. Aliquot to avoid repeated freezing and thawing.
Note	Best use within three months from the date of receipt of this protein.

Applications

- Enzyme-linked Immunoabsorbent Assay
- Western Blot (Recombinant protein)
- Antibody Production
- Protein Array

Gene Info — CLK1

Entrez GeneID [1195](#)

GeneBank Accession# [BC031549](#)

Protein Accession# [AAH31549](#)

Gene Name CLK1

Gene Alias CLK, CLK/STY, STY

Gene Description CDC-like kinase 1

Omim ID [601951](#)

Gene Ontology [Hyperlink](#)

Gene Summary This gene encodes a member of the CDC2-like (or LAMMER) family of dual specificity protein kinases. In the nucleus, the encoded protein phosphorylates serine/arginine-rich proteins involved in pre-mRNA processing, releasing them into the nucleoplasm. The choice of splice sites during pre-mRNA processing may be regulated by the concentration of transacting factors, including serine/arginine rich proteins. Therefore, the encoded protein may play an indirect role in governing splice site selection. Multiple transcript variants encoding different isoforms have been found for this gene. [provided by RefSeq]

Other Designations CDC28/CDC2-like kinase|dual specificity protein kinase CLK1|protein tyrosine kinase STY