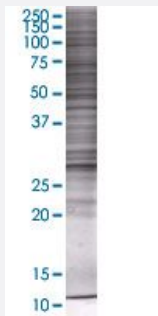


# CLIC2 293T Cell Transient Overexpression Lysate(Denatured)

Catalog # H00001193-T02

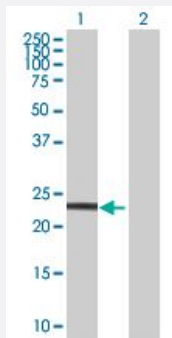
Size 100 uL

## Applications



### SDS-PAGE Gel

CLIC2 transfected lysate.



### Western Blot

Lane 1: CLIC2 transfected lysate ( 27.28 KDa)

Lane 2: Non-transfected lysate.

## Specification

Transfected Cell Line	293T
Plasmid	pCMV-CLIC2 full-length
Host	Human
Theoretical MW (kDa)	27.28
Interspecies Antigen Sequence	Rat (93)

**Quality Control Testing**

Transient overexpression cell lysate was tested with Anti-CLIC2 antibody ([H00001193-B02](#)) by Western Blots.  
SDS-PAGE Gel  
CLIC2 transfected lysate.  
Western Blot  
Lane 1: CLIC2 transfected lysate ( 27.28 KDa)  
Lane 2: Non-transfected lysate.

**Storage Buffer**

1X Sample Buffer (50 mM Tris-HCl, 2% SDS, 10% glycerol, 300 mM 2-mercaptoethanol, 0.01% Bromophenol blue)

**Storage Instruction**

Store at -80°C. Aliquot to avoid repeated freezing and thawing.

## Applications

- Western Blot

## Gene Info — CLIC2

**Entrez GeneID**[1193](#)**GeneBank Accession#**[NM\\_001289.4](#)**Protein Accession#**[NP\\_001280.3](#)**Gene Name**

CLIC2

**Gene Alias**

CLIC2b, XAP121

**Gene Description**

chloride intracellular channel 2

**Omim ID**[300138](#)**Gene Ontology**[Hyperlink](#)**Gene Summary**

Chloride channels are a diverse group of proteins that regulate fundamental cellular processes including stabilization of cell membrane potential, transepithelial transport, maintenance of intracellular pH, and regulation of cell volume. Chloride intracellular channel 2 is a member of the p64 family ; the protein is detected in fetal liver and adult skeletal muscle tissue. This gene maps to the candidate region on chromosome X for incontinentia pigmenti. [provided by RefSeq]

**Other Designations**

OTTHUMP00000024248