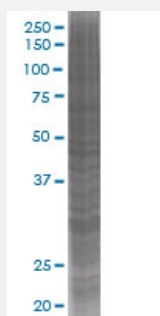


CLIC2 293T Cell Transient Overexpression Lysate(Denatured)

Catalog # H00001193-T01

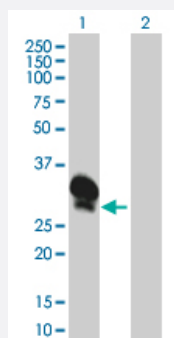
Size 100 uL

Applications



SDS-PAGE Gel

CLIC2 transfected lysate



Western Blot

Lane 1: CLIC2 transfected lysate (27.28 KDa).

Lane 2: Non-transfected lysate.

Specification

Transfected Cell Line 293T

Plasmid pCMV-CLIC2 full-length

Host Human

Theoretical MW (kDa) 27.28

Interspecies Antigen Sequence Rat (92)

Quality Control Testing

Transient overexpression cell lysate was tested with Anti-CLIC2 antibody ([H00001193-B01](#)) by Western Blots.
SDS-PAGE Gel
CLIC2 transfected lysate
Western Blot
Lane 1: CLIC2 transfected lysate (27.28 KDa).
Lane 2: Non-transfected lysate.

Storage Buffer

1X Sample Buffer (50 mM Tris-HCl, 2% SDS, 10% glycerol, 300 mM 2-mercaptoethanol, 0.01% Bromophenol blue)

Storage Instruction

Store at -80°C. Aliquot to avoid repeated freezing and thawing.

Applications

- Western Blot

Gene Info — CLIC2

Entrez GeneID[1193](#)**GeneBank Accession#**[BC022305](#)**Protein Accession#**[AAH22305](#)**Gene Name**

CLIC2

Gene Alias

CLIC2b, XAP121

Gene Description

chloride intracellular channel 2

Omim ID[300138](#)**Gene Ontology**[Hyperlink](#)**Gene Summary**

Chloride channels are a diverse group of proteins that regulate fundamental cellular processes including stabilization of cell membrane potential, transepithelial transport, maintenance of intracellular pH, and regulation of cell volume. Chloride intracellular channel 2 is a member of the p64 family ; the protein is detected in fetal liver and adult skeletal muscle tissue. This gene maps to the candidate region on chromosome X for incontinentia pigmenti. [provided by RefSeq]

Other Designations

OTTHUMP00000024248