

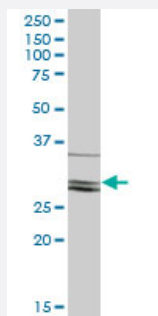
MaxPab®

CLIC2 purified MaxPab mouse polyclonal antibody (B02P)

Catalog # H00001193-B02P

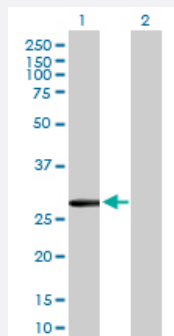
Size 50 ug

Applications



Western Blot (Tissue lysate)

CLIC2 MaxPab polyclonal antibody. Western Blot analysis of CLIC2 expression in human spleen.



Western Blot (Transfected lysate)

Western Blot analysis of CLIC2 expression in transfected 293T cell line ([H00001193-T03](#)) by CLIC2 MaxPab polyclonal antibody.

Lane 1: CLIC2 transfected lysate(27.17 KDa).

Lane 2: Non-transfected lysate.

Specification

Product Description

Mouse polyclonal antibody raised against a full-length human CLIC2 protein.

Immunogen

CLIC2 (NP_001280.3, 1 a.a. ~ 247 a.a) full-length human protein.

Sequence

MSGLRPGTQVDPEIELFVKAGSDGESIGNCPFCQRLFMLWLKGVKFNVTTVDMTRKPEELKDLA
PGTNPPFLVYNKELKTDKIEEFLEQTLAPPRYPHLSPKYKESFDVGCNLFASFAYIKNTQKEAN
KNFEKSLLKEFKRLDDYLNTPLLDEIDPDSAEPPVSRRLFLDGDQLTLADCSLLPKLNIIKVAACK
YRDFDIPAEFSGVWRYLHNAYAREEFTHTCPEDKEIENTYANVAKQKS

Host

Mouse

Reactivity

Human

Interspecies Antigen Sequence	Rat (93)
Quality Control Testing	Antibody reactive against mammalian transfected lysate.
Storage Buffer	In 1x PBS, pH 7.4
Storage Instruction	Store at -20°C or lower. Aliquot to avoid repeated freezing and thawing.

Applications

- Western Blot (Tissue lysate)

CLIC2 MaxPab polyclonal antibody. Western Blot analysis of CLIC2 expression in human spleen.

[Protocol Download](#)

- Western Blot (Transfected lysate)

Western Blot analysis of CLIC2 expression in transfected 293T cell line ([H00001193-T03](#)) by CLIC2 MaxPab polyclonal antibody.

Lane 1: CLIC2 transfected lysate(27.17 KDa).

Lane 2: Non-transfected lysate.

[Protocol Download](#)

Gene Info — CLIC2

Entrez GeneID	1193
GeneBank Accession#	NM_001289.4
Protein Accession#	NP_001280.3
Gene Name	CLIC2
Gene Alias	CLIC2b, XAP121
Gene Description	chloride intracellular channel 2
Omim ID	300138
Gene Ontology	Hyperlink

Gene Summary

Chloride channels are a diverse group of proteins that regulate fundamental cellular processes including stabilization of cell membrane potential, transepithelial transport, maintenance of intracellular pH, and regulation of cell volume. Chloride intracellular channel 2 is a member of the p64 family ; the protein is detected in fetal liver and adult skeletal muscle tissue. This gene maps to the candidate region on chromosome X for incontinentia pigmenti. [provided by RefSeq]

Other Designations

OTTHUMP00000024248