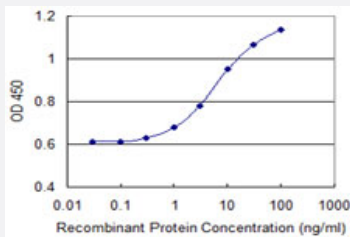


CLCA1 monoclonal antibody (M02), clone 1C4

Catalog # H00001179-M02

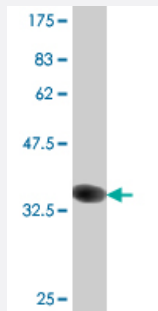
Size 100 ug

Applications



Sandwich ELISA (Recombinant protein)

Detection limit for recombinant GST tagged CLCA1 is 0.3 ng/ml as a capture antibody.



Western Blot detection against Immunogen (36.74 KDa) .

Specification

| | |
|----------------------------|--|
| Product Description | Mouse monoclonal antibody raised against a partial recombinant CLCA1. |
| Immunogen | CLCA1 (NP_001276, 677 a.a. ~ 776 a.a) partial recombinant protein with GST tag. MW of the GST tag alone is 26 KDa. |
| Sequence | ALGGVNAARRRVIPQQSGALYIPGWIENDEIQWNPPRPEINKDDVQHKQVCFSTRSSGGSFVASD VPNAPIPDLFPPGQITDLKAEIHGGSLINLTWTAP |
| Host | Mouse |
| Reactivity | Human |

| | |
|-------------------------------|--|
| Interspecies Antigen Sequence | Mouse (66); Rat (69) |
| Isotype | IgG2a Kappa |
| Quality Control Testing | Antibody Reactive Against Recombinant Protein. Western Blot detection against Immunogen (36.74 KDa) . |
| Storage Buffer | In 1x PBS, pH 7.4 |
| Storage Instruction | Store at -20°C or lower. Aliquot to avoid repeated freezing and thawing. |

Applications

- Western Blot (Recombinant protein)

[Protocol Download](#)

- Sandwich ELISA (Recombinant protein)

Detection limit for recombinant GST tagged CLCA1 is 0.3 ng/ml as a capture antibody.

[Protocol Download](#)

- ELISA

Gene Info — CLCA1

| | |
|---------------------|-------------------------------------|
| Entrez GeneID | 1179 |
| GeneBank Accession# | NM_001285 |
| Protein Accession# | NP_001276 |
| Gene Name | CLCA1 |
| Gene Alias | CACC, CACC1, CLCRG1, FLJ95147, GOB5 |
| Gene Description | chloride channel regulator 1 |
| Omim ID | 603906 |
| Gene Ontology | Hyperlink |

Gene Summary

This gene encodes a member of the calcium sensitive chloride conductance protein family. To date, all members of this gene family map to the same region on chromosome 1p31-p22 and share a high degree of homology in size, sequence, and predicted structure, but differ significantly in their tissue distributions. The encoded protein is expressed as a precursor protein that is processed into two cell-surface-associated subunits, although the site at which the precursor is cleaved has not been precisely determined. The encoded protein may be involved in mediating calcium-activated chloride conductance in the intestine. [provided by RefSeq]

Other Designations

CLCA family member 1, chloride channel regulator|OTTHUMP00000011907|calcium-activated chloride channel protein 1|calcium-dependent chloride channel-1|chloride channel, calcium activated, family member 1

Publication Reference

- [Profiling of differentially expressed proteins in stage IV colorectal cancers with good and poor outcomes.](#)

Kim HJ, Kang UB, Lee H, Jung JH, Lee ST, Yu MH, Kim H, Lee C.

Journal of Proteomics 2012 Jun; 75(10):2983.

Pathway

- [Olfactory transduction](#)

Disease

- [Asthma](#)
- [Birth Weight](#)
- [Cardiovascular Diseases](#)
- [Cystic Fibrosis](#)
- [Diabetes Mellitus](#)
- [Edema](#)
- [Genetic Predisposition to Disease](#)
- [Glioblastoma](#)
- [Glioma](#)

- [Ileus](#)
- [Leukemia](#)
- [Meningeal Neoplasms](#)
- [Meningioma](#)