

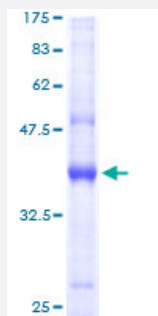
Full-Length

AP2S1 (Human) Recombinant Protein (P01)

Catalog # H00001175-P01

Size 25 ug, 10 ug

Applications



Specification

Product Description	Human AP2S1 full-length ORF (AAH06337, 1 a.a. - 142 a.a.) recombinant protein with GST-tag at N-terminal.
Sequence	MIRFILIQNRAGKTRLAKWYMQFDDDEKQKLIEEVHAVVTVRDAKHTNFVEFRNFKIYRRYAGLYFC ICVDVNDNNLAYLEAIHNFVEVLNEYFHNVCELDLVFNFYKVYTVVDEMFLAGEIRETSQTKVLKQL LMLQSLE
Host	Wheat Germ (in vitro)
Theoretical MW (kDa)	41.36
Preparation Method	in vitro wheat germ expression system
Purification	Glutathione Sepharose 4 Fast Flow
Quality Control Testing	12.5% SDS-PAGE Stained with Coomassie Blue.
Storage Buffer	50 mM Tris-HCl, 10 mM reduced Glutathione, pH=8.0 in the elution buffer.
Storage Instruction	Store at -80°C. Aliquot to avoid repeated freezing and thawing.
Note	Best use within three months from the date of receipt of this protein.

Applications

- Enzyme-linked Immunoabsorbent Assay
- Western Blot (Recombinant protein)
- Antibody Production
- Protein Array

Gene Info — AP2S1

Entrez GeneID [1175](#)

GeneBank Accession# [BC006337](#)

Protein Accession# [AAH06337](#)

Gene Name AP2S1

Gene Alias AP17, AP17-DELTA, CLAPS2

Gene Description adaptor-related protein complex 2, sigma 1 subunit

Omim ID [602242](#)

Gene Ontology [Hyperlink](#)

Gene Summary One of two major clathrin-associated adaptor complexes, AP-2, is a heterotetramer which is associated with the plasma membrane. This complex is composed of two large chains, a medium chain, and a small chain. This gene encodes the small chain of this complex. Alternative splicing has been observed in this gene and results in two known transcripts. [provided by RefSeq]

Other Designations clathrin assembly protein 2 small chain|clathrin-associated/assembly/adaptor protein, small 2 (17 kD)

Pathway

- [Endocytosis](#)