

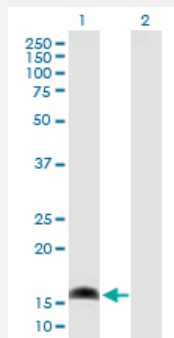
MaxPab®

# AP1S1 purified MaxPab mouse polyclonal antibody (B02P)

Catalog # H00001174-B02P

Size 50 ug

## Applications



### Western Blot (Transfected lysate)

Western Blot analysis of AP1S1 expression in transfected 293T cell line ([H00001174-T03](#)) by AP1S1 MaxPab polyclonal antibody.

Lane 1: AP1S1 transfected lysate(18.70 KDa).

Lane 2: Non-transfected lysate.

## Specification

Product Description	Mouse polyclonal antibody raised against a full-length human AP1S1 protein.
Immunogen	AP1S1 (NP_001274.1, 1 a.a. ~ 158 a.a) full-length human protein.
Sequence	MMRFMLLSRQGKLRQLQKWYLATSDKERKKMVRELMQVVLARKPKMCSFLEWRDLKVYKRYA SLYFCCAIEGQDNELITLLEIHYVELLDKYFGSVCELDIIFNFEKAYFILDEFMLGGDVQDTSKKS VLAIEQADLLQEEDESPRSVLEEMGLA
Host	Mouse
Reactivity	Human
Quality Control Testing	Antibody reactive against mammalian transfected lysate.
Storage Buffer	In 1x PBS, pH 7.4
Storage Instruction	Store at -20°C or lower. Aliquot to avoid repeated freezing and thawing.

## Applications

- Western Blot (Transfected lysate)

Western Blot analysis of AP1S1 expression in transfected 293T cell line ([H00001174-T03](#)) by AP1S1 MaxPab polyclonal antibody.

Lane 1: AP1S1 transfected lysate(18.70 KDa).

Lane 2: Non-transfected lysate.

[Protocol Download](#)

## Gene Info — AP1S1

Entrez GeneID [1174](#)

GeneBank Accession# [NM\\_001283](#)

Protein Accession# [NP\\_001274.1](#)

Gene Name AP1S1

Gene Alias AP19, CLAPS1, FLJ92436, SIGMA1A, WUGSC:H\_DJ0747G18.2

Gene Description adaptor-related protein complex 1, sigma 1 subunit

Omim ID [603531](#)

Gene Ontology [Hyperlink](#)

**Gene Summary** The protein encoded by this gene is part of the clathrin coat assembly complex which links clathrin to receptors in coated vesicles. These vesicles are involved in endocytosis and Golgi processing. This protein, as well as beta-prime-adaptin, gamma-adaptin, and the medium (mu) chain AP47, form the AP-1 assembly protein complex located at the Golgi vesicle. [provided by RefSeq]

**Other Designations** AP-1 complex subunit sigma-1A|HA1 19 kDa subunit|clathrin assembly protein complex 1 sigma-1A small chain|clathrin coat assembly protein AP19|clathrin-associated/assembly/adaptor protein , small 1 (19kD)|golgi adaptor HA1/AP1 adaptin sigma-1A subunit|sigma

## Pathway

- [Lysosome](#)